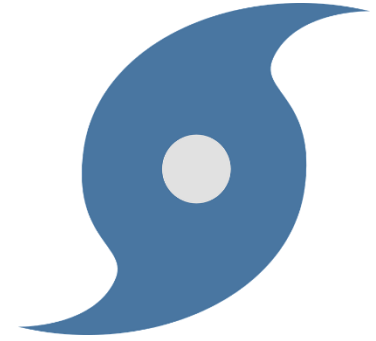




FOR IMMEDIATE RELEASE
MONDAY, AUGUST 24, 2020

HURRICANE LAURA REPORT



ALLISON NATHAN GETZ
PUBLIC INFORMATION OFFICER
CELL: (409) 351-3882

August 26th Daily Briefing

- Hurricane Laura is currently a major category 3 hurricane and is expected to strengthen to a Category 4 today before making landfall between Southwest Louisiana and Southeast Texas Areas. Arrival of tropical storm force winds is expected later today with forecasted storm surge of up to 18ft above ground level for coastal areas. Catastrophic and life-threatening flooding is expected. **All Jefferson County Citizens are urged to evacuate!** Once tropical storm force winds begin in our area, first responders will be pulled in and unable to respond to requests for assistance until the winds subside. It is imperative to leave now or be prepared to take care of yourself through the storm. **Do not allow a fear of being unable to return to the area prevent you from evacuating.** Emergency Management's aim is to allow re-entry to the area as quickly as can safely be accomplished.
- Highway 365 Levee gate is now closed.
- For those that need assistance with evacuation – call 211 regardless of where you are located
- Employees exempt from these evacuations are those of oil terminals, pipelines and oil supply facilities, petrochemical and refining complexes; employees of hospitals, trauma centers, nursing homes, convalescent facilities or other healthcare providers, utility and insurance adjusters, disaster clean personnel and governmental employees deemed essential by their employer
- Slides below detail the latest weather update from the National Weather Service.



HURRICANE LAURA BRIEFING

10:00 AM CDT

Wednesday, August 26, 2020

Prepared by: Roger Erickson, NWS Lake Charles

What has changed: Storm surge forecast increases to 12 to 18 feet above ground level for coastal sections of southwest Louisiana.

Next Briefing: Wednesday, August 26th, at 4:00 PM CDT





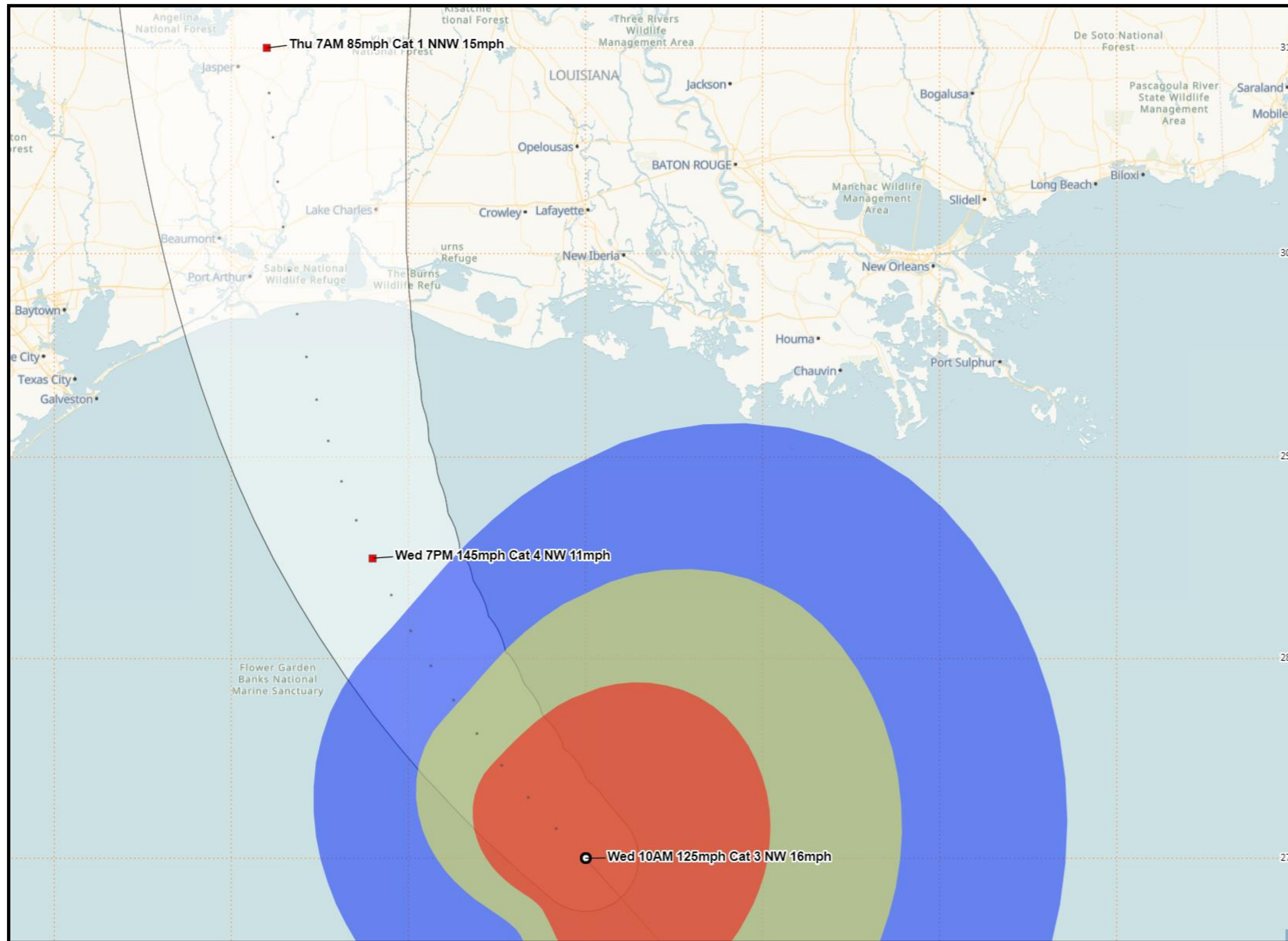
- Hurricane Laura is a major category 3 hurricane. It could strengthen to category 4 today before landfall tonight in southwest Louisiana. Expect widespread power outages, trees downed, homes and businesses damaged.
- The storm surge forecast is 12 to 18 feet above ground level for coastal areas. Catastrophic and life threatening flooding is expected – not just at the coast but as far inland as the I-10 corridor of southwest Louisiana.
- Rainfall of 5 to 10 inches with locally 15 inches will cause flooded roads. This rainfall will have a hard time draining due to the storm surge. Water rescues will likely be required if people are on the road and stay in the area.
- Record river flooding is expected on lower sections of the Calcasieu River.

Situation Overview

Hurricane Laura



Lake Charles WEATHER FORECAST OFFICE



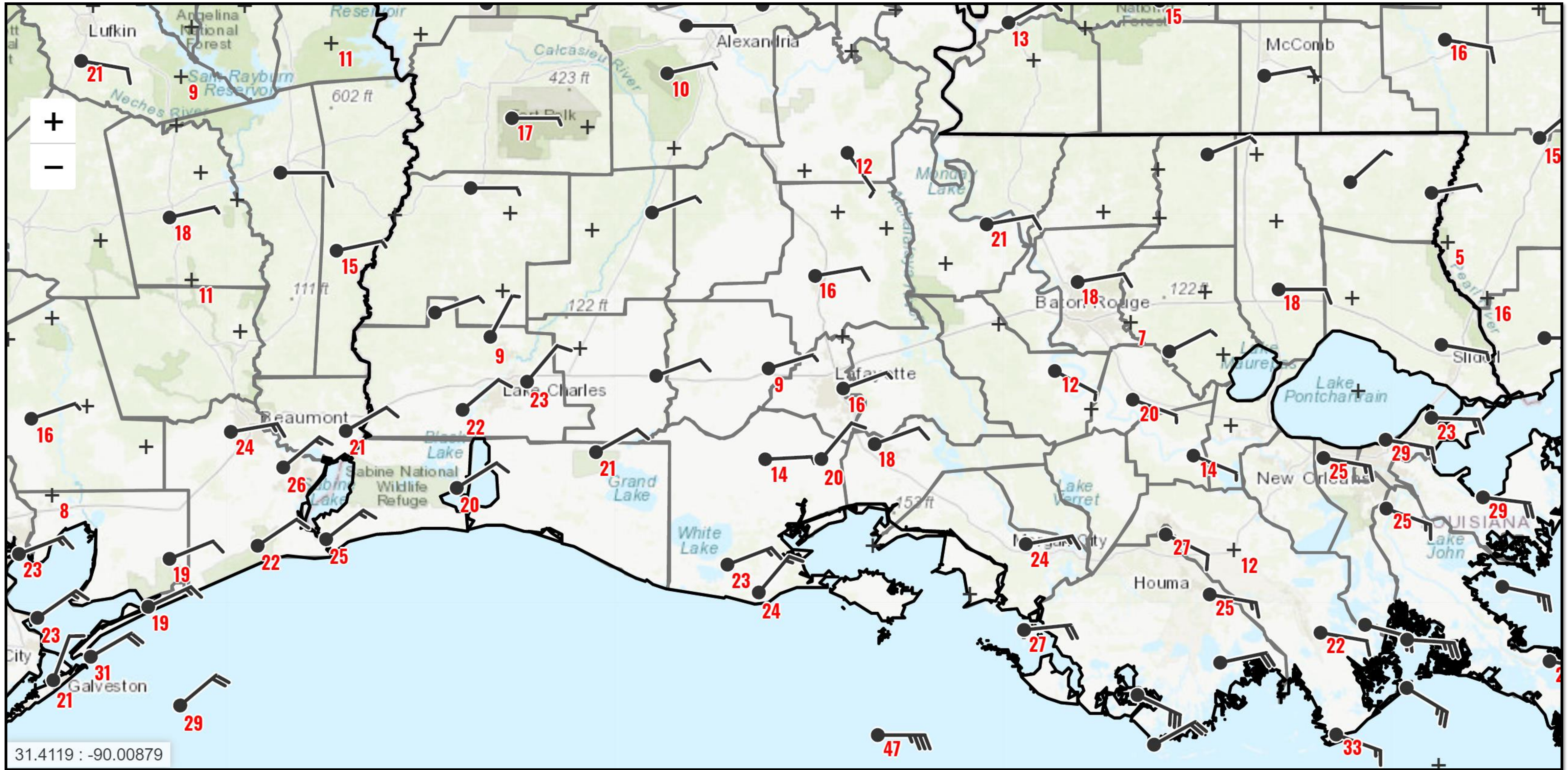
- Laura is still strengthening.
- Major weather impacts are expected in our region tonight into Thursday.

Current Wind Speeds

Hurricane Laura



Lake Charles
WEATHER FORECAST OFFICE

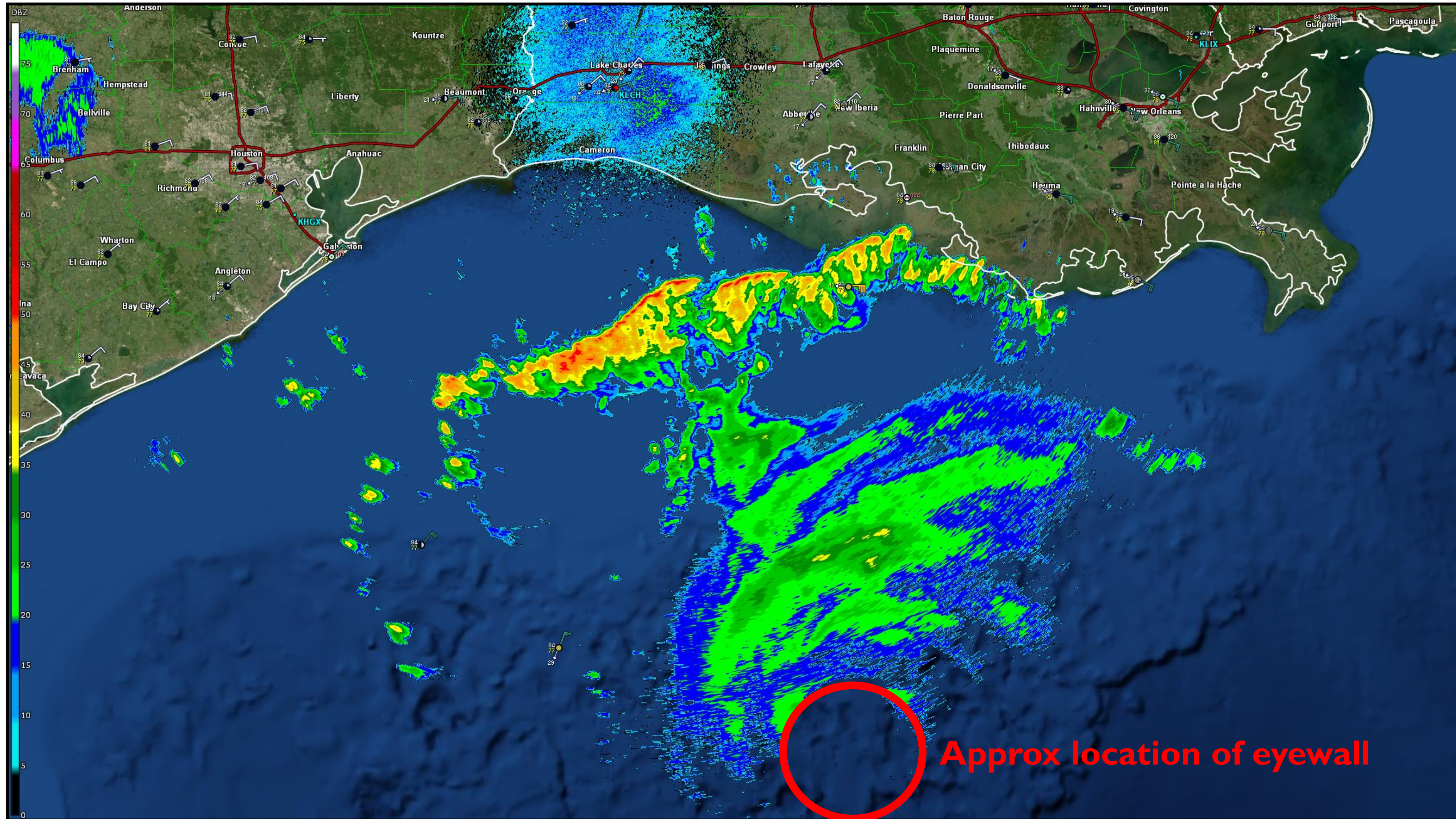


Weather Radar

Hurricane Laura



Lake Charles
WEATHER FORECAST OFFICE

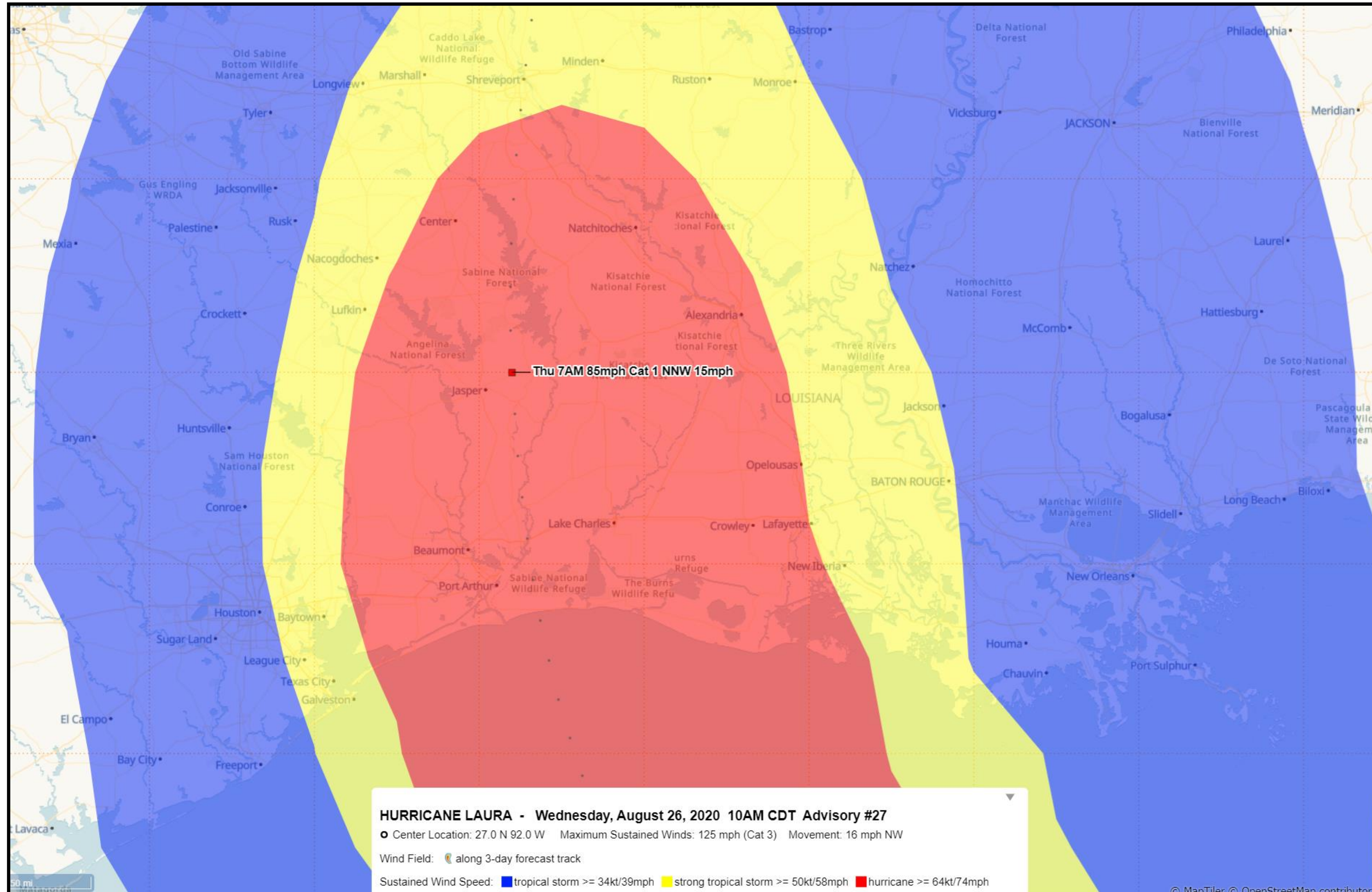


Wind Threat / Potential Impact

Hurricane Laura



Lake Charles
WEATHER FORECAST OFFICE



There is a potential for:

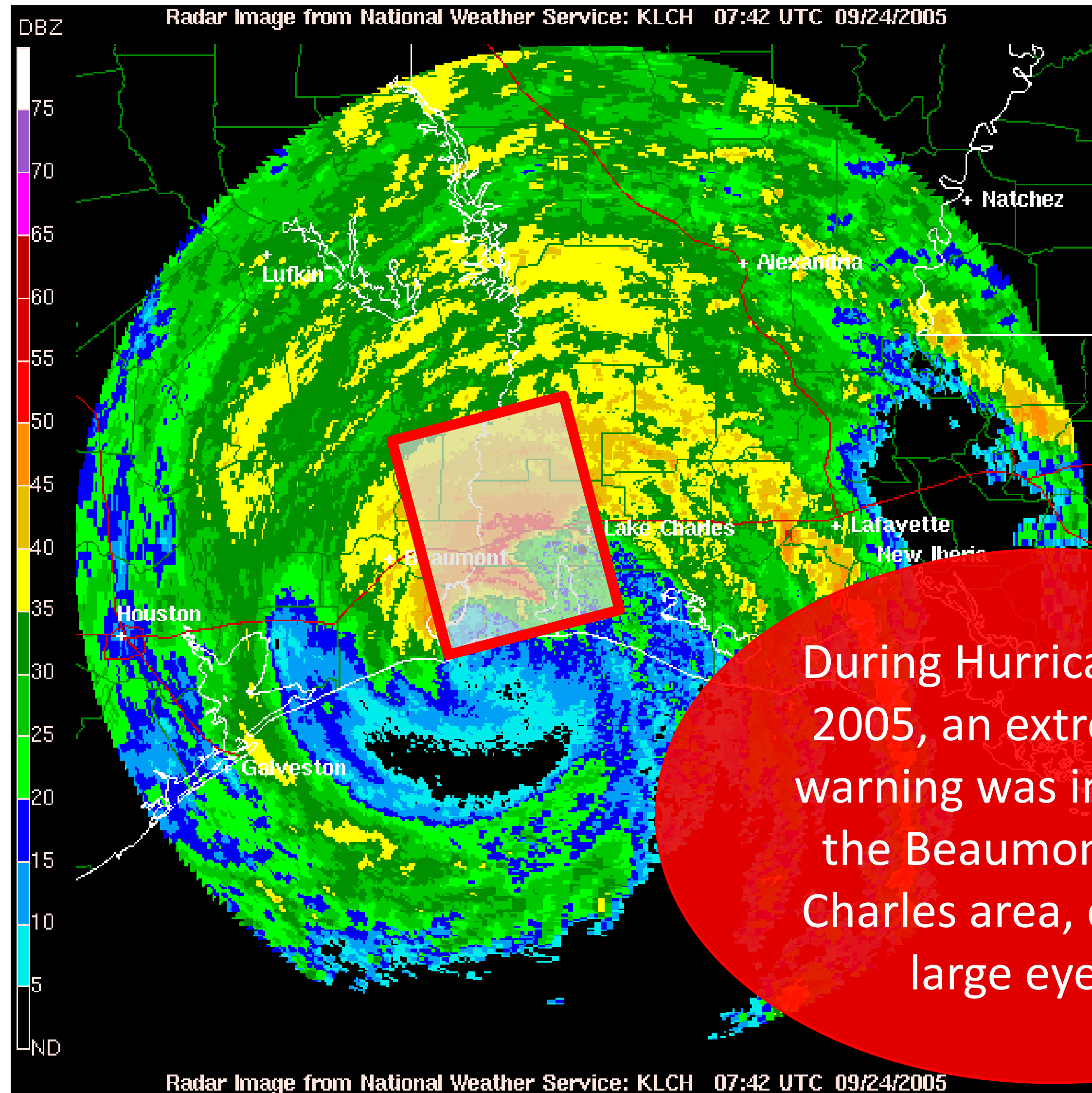
- Hurricane force winds for most of our region (red)
- Widespread power outages
- Numerous trees blown down
- Damage to homes and businesses

Extreme Wind Warning

Hurricane Laura



Lake Charles
WEATHER FORECAST OFFICE



During Hurricane Rita in 2005, an extreme wind warning was in effect for the Beaumont to Lake Charles area, due to the large eyewall.

The **Extreme Wind Warning** is used by the NWS to describe the location of the eyewall of landfalling category 3 or stronger hurricanes.

If people are in this warning they need to stay indoors, away from windows, and **treat it like you would a tornado warning.**

Wind Timing

Hurricane Laura



Lake Charles
WEATHER FORECAST OFFICE

Expected Duration of Wind Speeds

Location	Tropical Storm Force Winds	Hurricane Force Winds
Southeast Texas (Hardin, Jefferson, Orange)	Start this afternoon End Thursday afternoon 16-20 hours	Start early Thursday morning End Thursday midday 4-8 hours
East Texas (Tyler, Jasper, Newton)	Start early Thursday morning End Thursday evening 12-16 hours	Start Thursday morning End Thursday afternoon 2-4 hours
Southwest Louisiana (Allen, Beauregard, Calcasieu, Cameron, Jeff Davis)	Start this afternoon End Thursday afternoon 16-20 hours	Start early Thursday morning End Thursday midday 4-8 hours
South Central Louisiana (Acadia, Evangeline, Iberia, Lafayette, St. Landry, St. Martin, St. Mary, Vermilion)	Start this afternoon End Thursday afternoon 16-20 hours	Intermittent hurricane force gusts Thursday morning
Central Louisiana (Vernon, Rapides, Avoyelles)	Start early Thursday morning End Thursday evening 6-12 hours	Start Thursday morning End Thursday afternoon 2-4 hours

Storm Surge Timing

Hurricane Laura



Lake Charles
WEATHER FORECAST OFFICE

Location	Storm Surge Timing	Max Surge Values
Coastal sections of Jefferson County	Start this afternoon End Thursday afternoon	4-8 feet
Inland sections of Jefferson County	Start Thursday morning End Friday afternoon	minimal
Coastal sections of Cameron, Vermilion, Iberia, and St. Mary Parishes	Starting now End Friday afternoon	12-18 feet
Inland sections of Cameron, Vermilion, Iberia, St. Mary Parishes	Start Thursday morning Will linger through the weekend	10-15 feet
Orange County, Calcasieu, Jeff Davis, Acadia Parishes	Start Thursday morning Will linger through the weekend	8-12 feet

Storm Surge Inundation

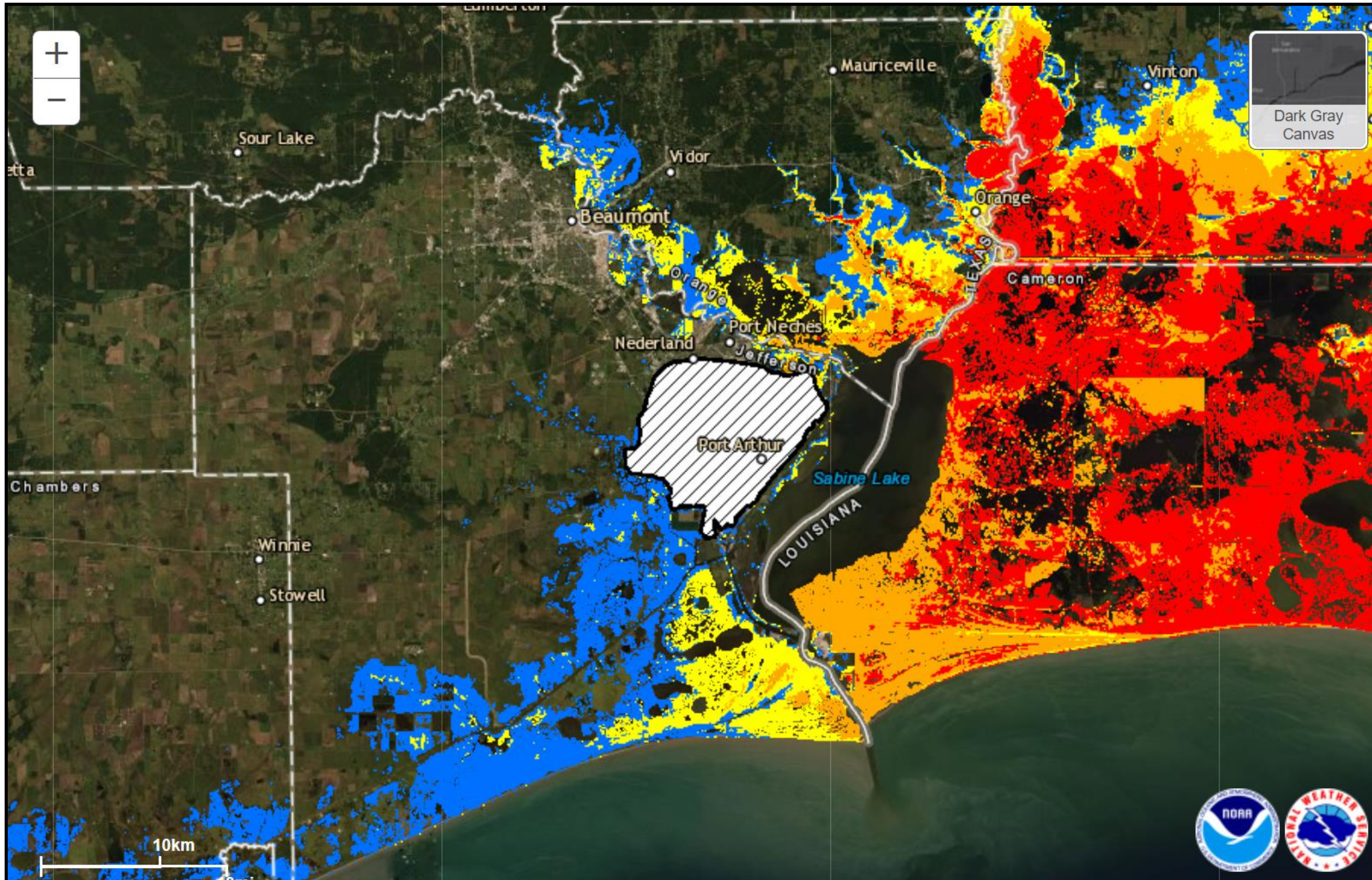
Hurricane Laura



Lake Charles
WEATHER FORECAST OFFICE

Storm surge values came down significantly in Jefferson County. We do not expect the seawall to be overtopped.

Orange County could still see storm surge flooding.



Potential Storm Surge Flooding*

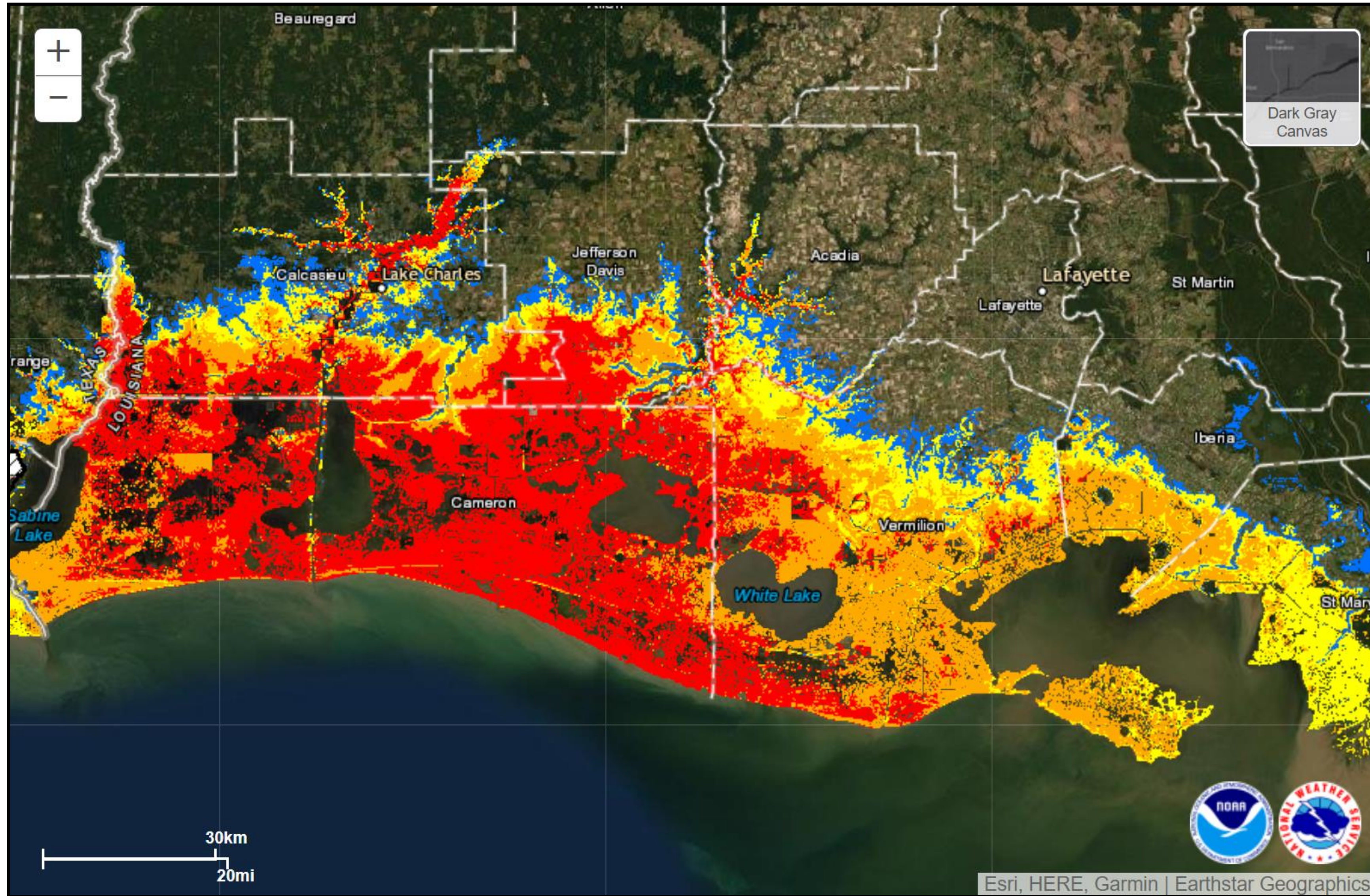
- Intertidal Zone/Estuarine Wetland
- Greater than 1 foot above ground
- Greater than 3 feet above ground
- Greater than 6 feet above ground
- Greater than 9 feet above ground
- Leveed area
- Consult local officials for flood risk

Storm Surge Inundation

Hurricane Laura



Lake Charles
WEATHER FORECAST OFFICE



Catastrophic storm surge is expected in Cameron, Calcasieu, Jeff Davis, and Vermilion Parishes.

Potential Storm Surge Flooding*

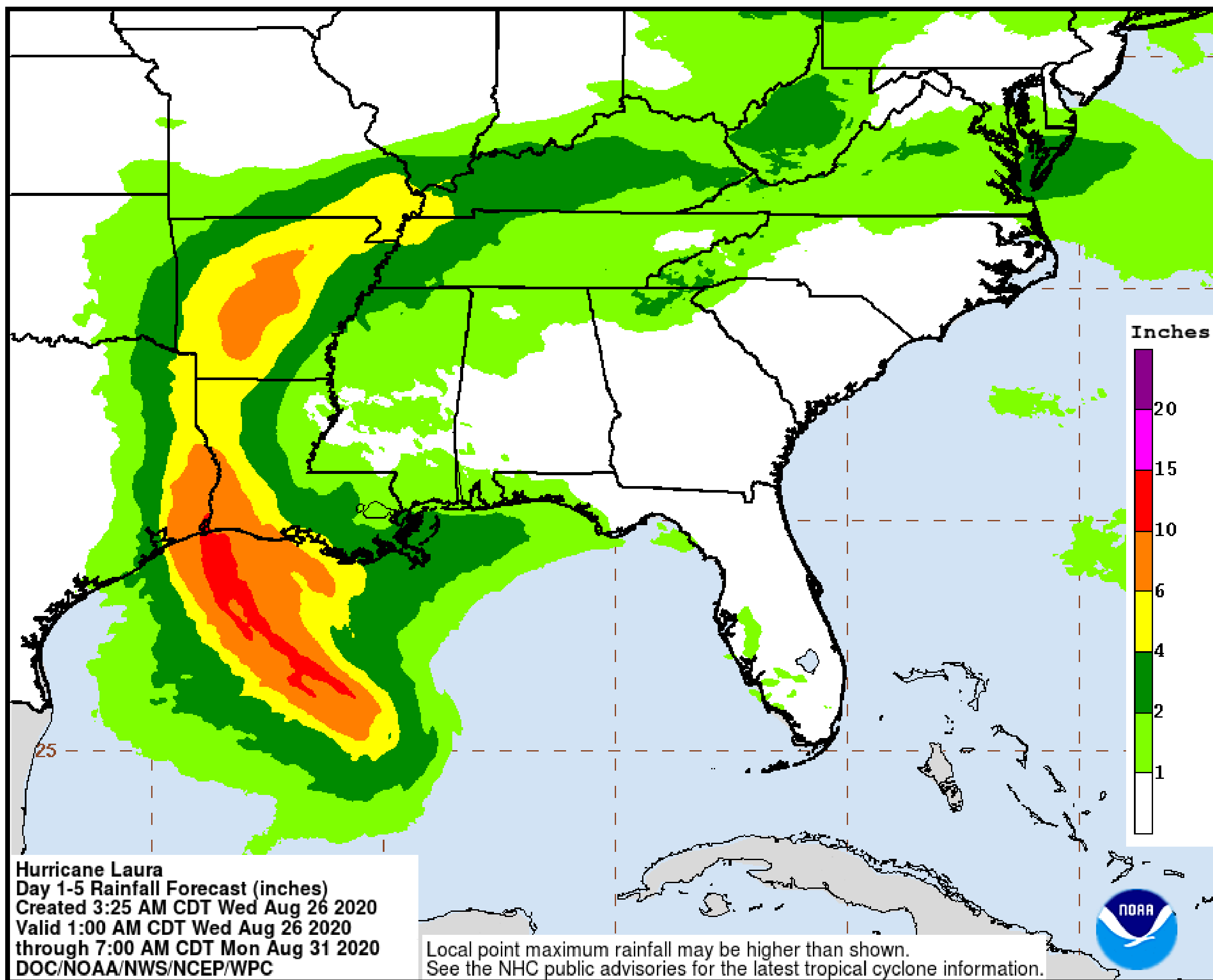
- Intertidal Zone/Estuarine Wetland
- Greater than 1 foot above ground
- Greater than 3 feet above ground
- Greater than 6 feet above ground
- Greater than 9 feet above ground
- Leveed area
- Consult local officials for flood risk

Rainfall Forecast

Hurricane Laura



Lake Charles
WEATHER FORECAST OFFICE



Five to ten inches of rain is possible near and to the right of where Laura makes landfall.

Locally higher amounts of 15 inches are possible.

The timing of this heavy rain is starting today and continuing into Thursday.

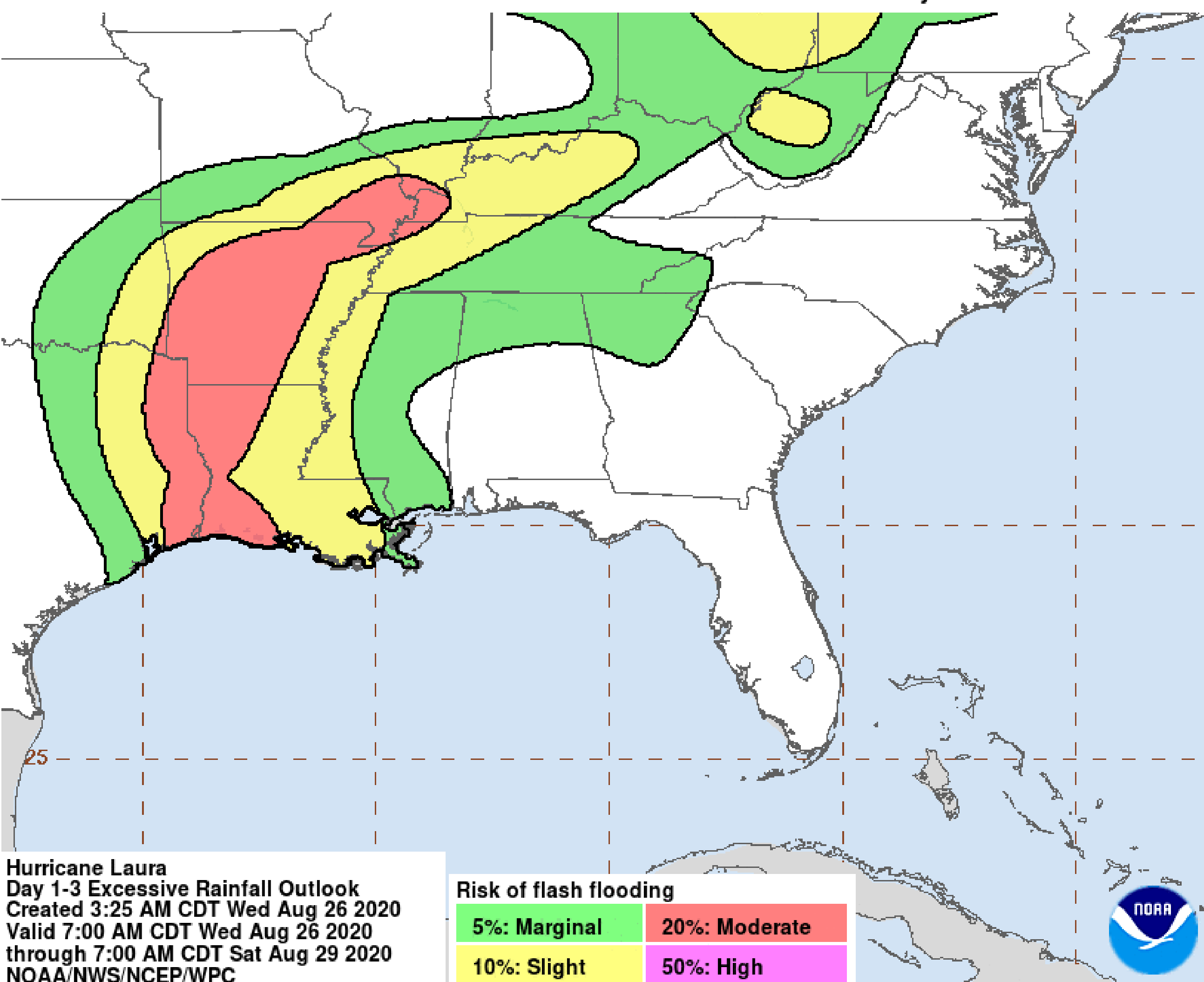
Risk of Flash Flooding

Hurricane Laura

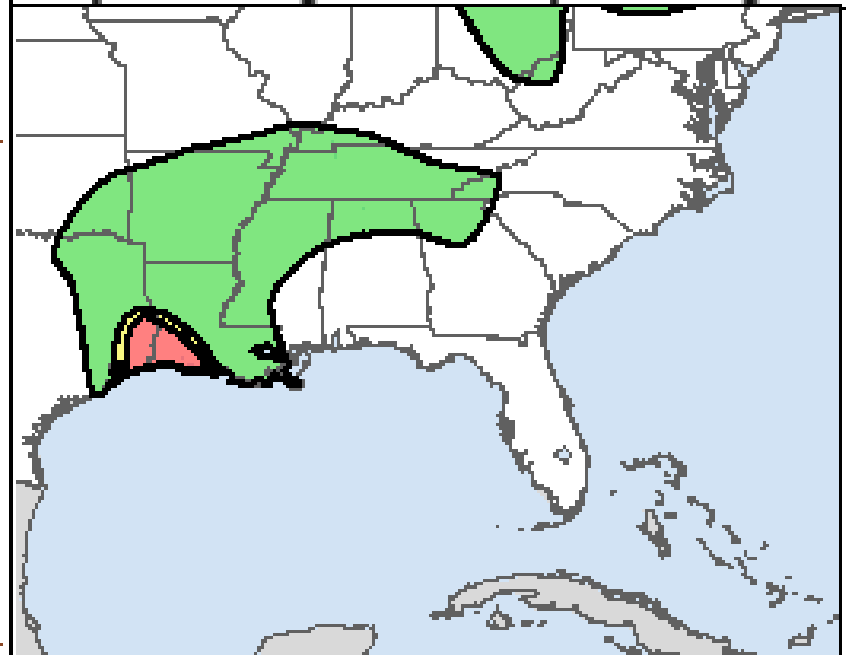


Lake Charles
WEATHER FORECAST OFFICE

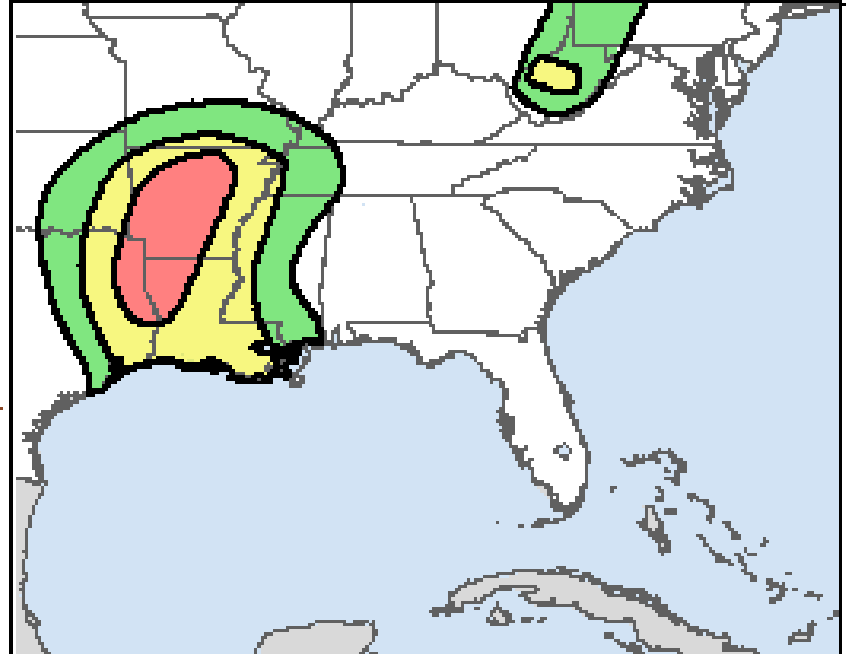
Greatest Flash Flood Risk Over the Next 3 Days



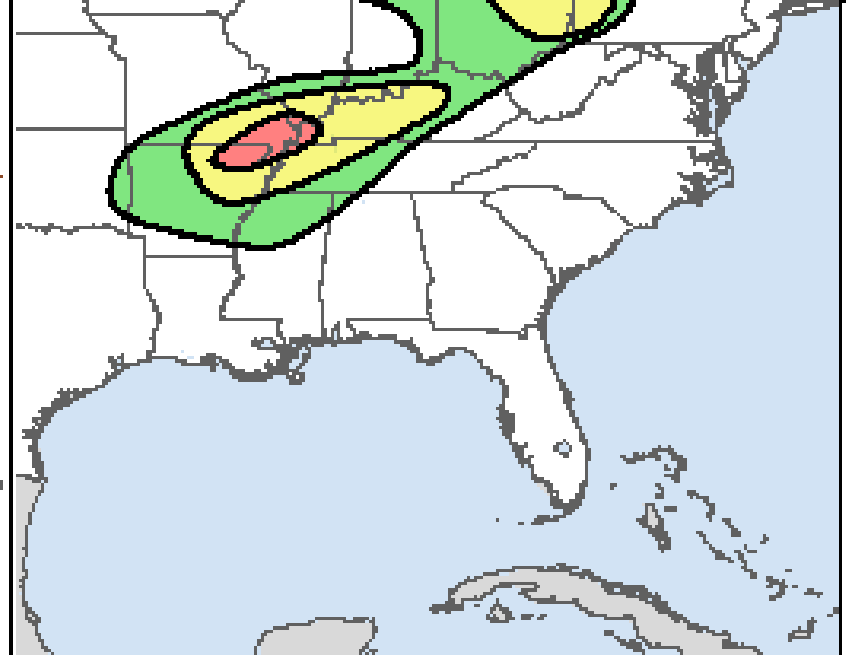
Day 1 Through Thursday morning



Day 2 Through Friday morning



Day 3 Through Saturday morning



Hurricane Laura
Day 1-3 Excessive Rainfall Outlook
Created 3:25 AM CDT Wed Aug 26 2020
Valid 7:00 AM CDT Wed Aug 26 2020
through 7:00 AM CDT Sat Aug 29 2020
NOAA/NWS/NCEP/WPC

Risk of flash flooding	
5%: Marginal	20%: Moderate
10%: Slight	50%: High



Significant flooding of roads and property is a risk in the red zone on this map.

Expect to see some water rescues being necessary in these areas.

Storm surge flooding will exasperate the flooding from the rain.

River Flooding Expected

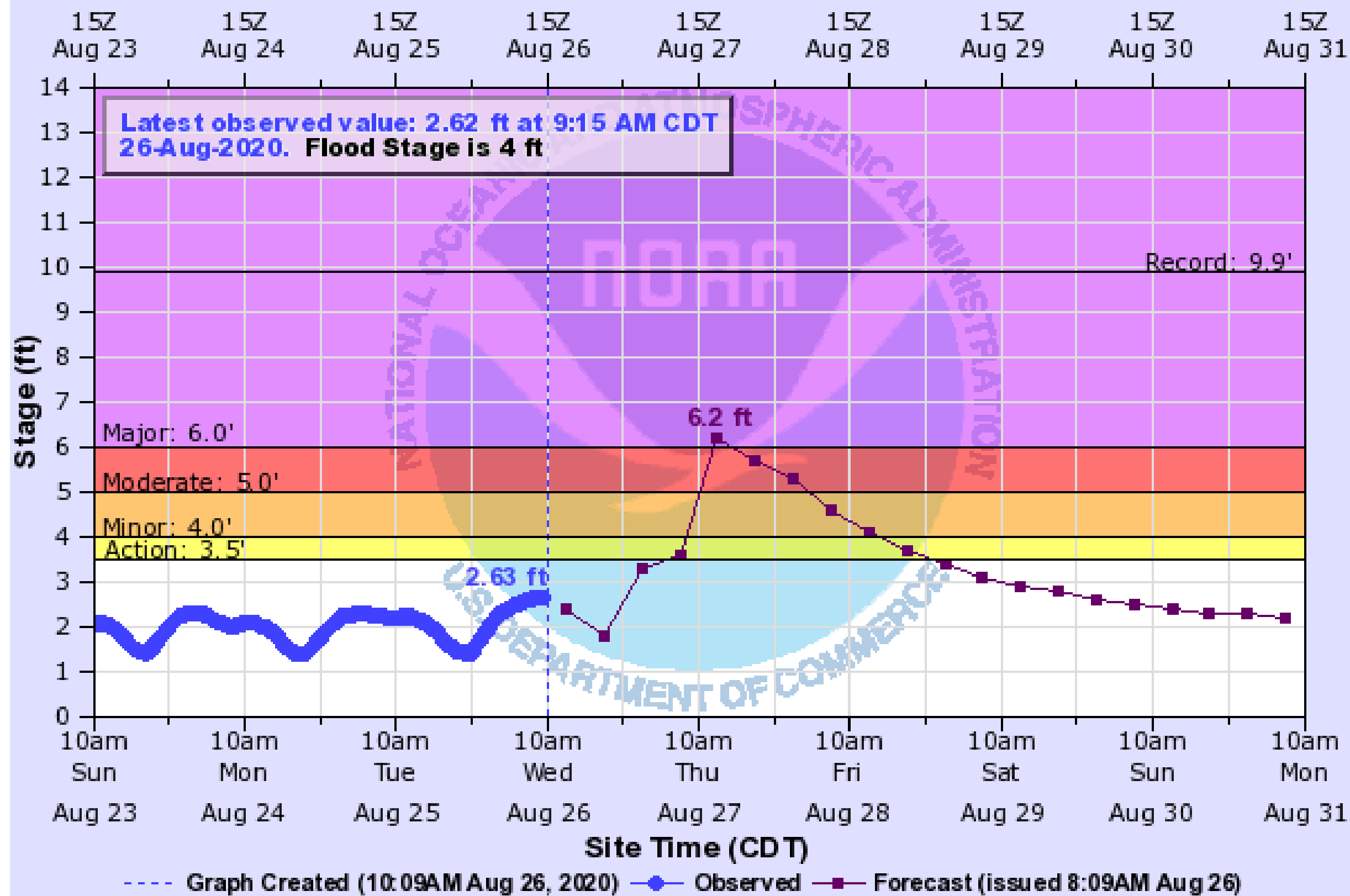
Hurricane Laura



Lake Charles
WEATHER FORECAST OFFICE

SABINE RIVER AT ORANGE

Universal Time (UTC)

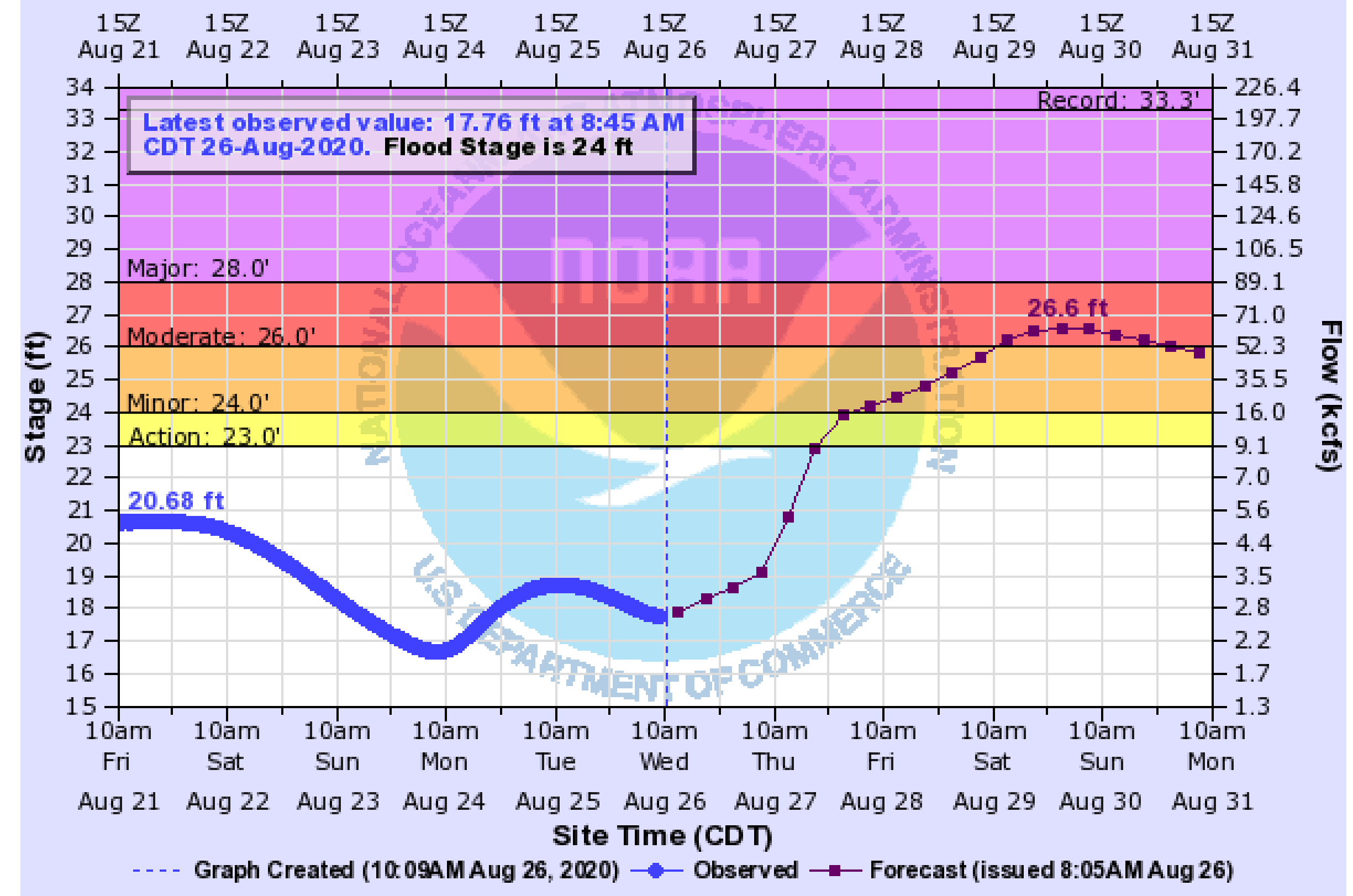


ORNT2(plotting HGIRG) "Gage 0" Datum: 0'

Observations courtesy of US Geological Survey

SABINE RIVER AT DEWEYVILLE

Universal Time (UTC)



DWYT2(plotting HGIRG) "Gage 0" Datum: -5.92'

Observations courtesy of US Geological Survey

River Flooding Expected

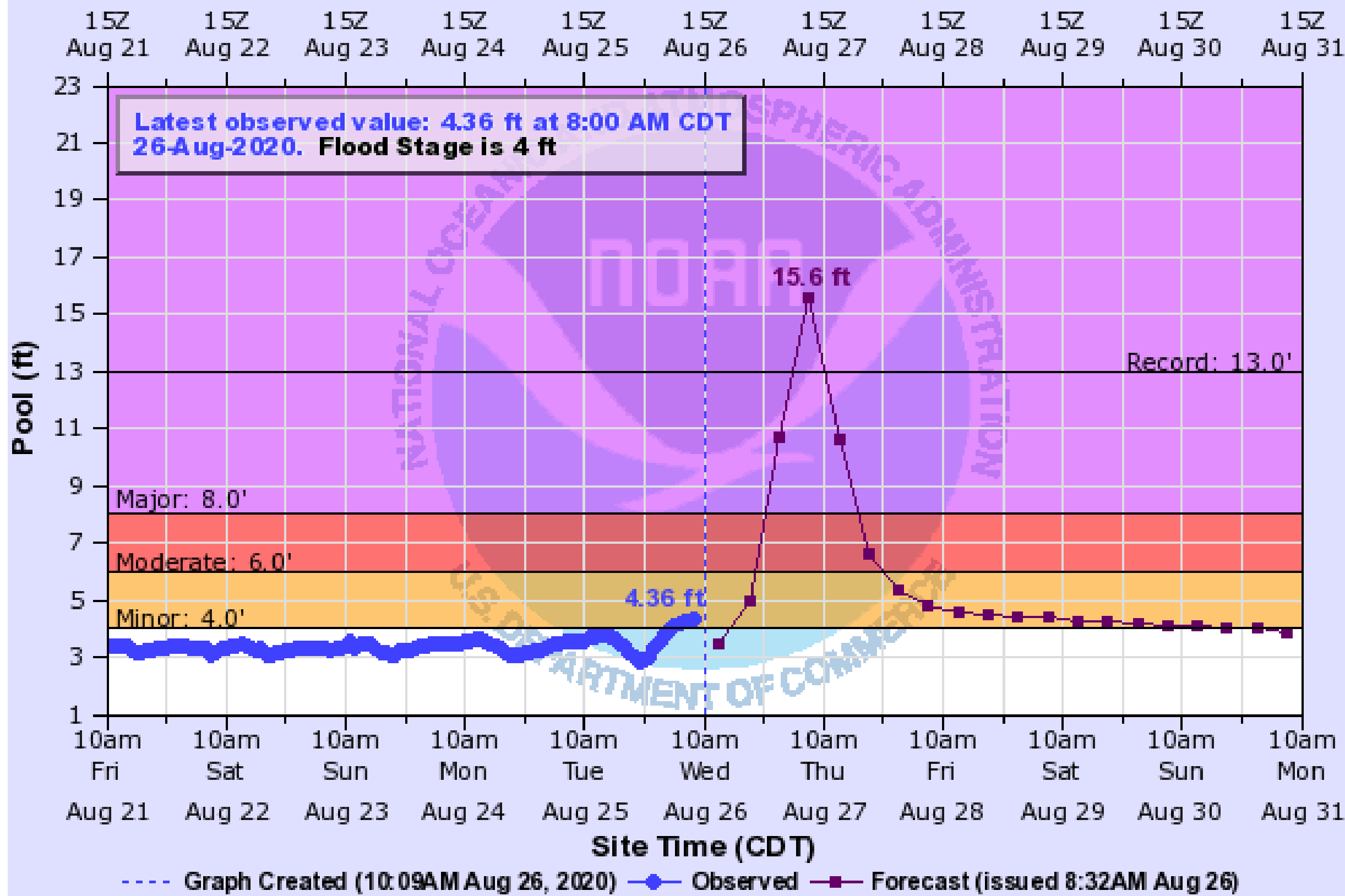
Hurricane Laura



Lake Charles
WEATHER FORECAST OFFICE

CALCASIEU RIVER AT SALTWATER BARRIER

Universal Time (UTC)

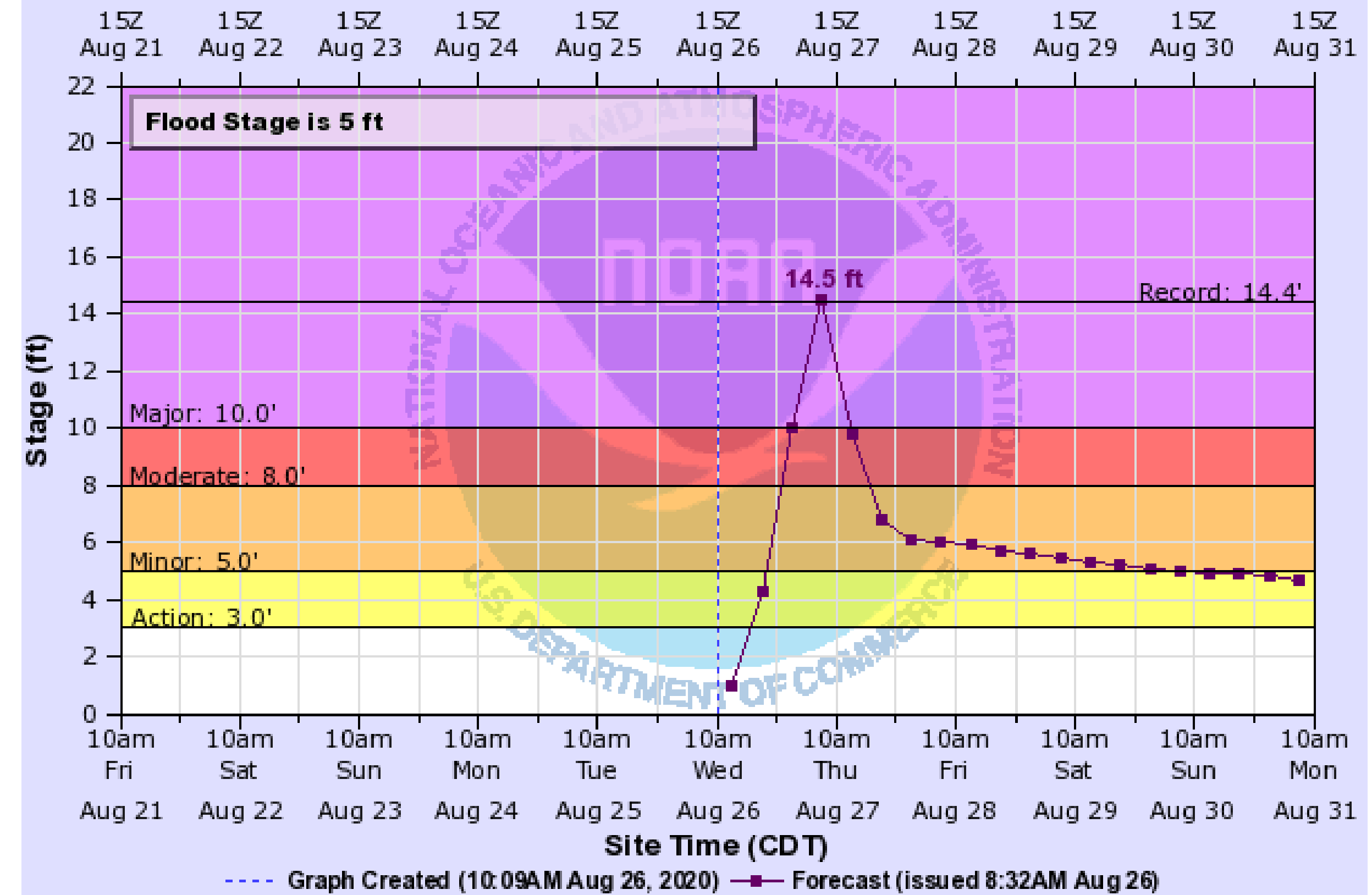


LCHL1(plotting HPIRG) "Gage 0" Datum: -0.78'

Observations courtesy of US Geological Survey

CALCASIEU RIVER AT SAM HOUSTON JONES STATE PARK

Universal Time (UTC)



LCRL1(plotting HGIRZ) "Gage 0" Datum: -0.98'

River Flooding Expected

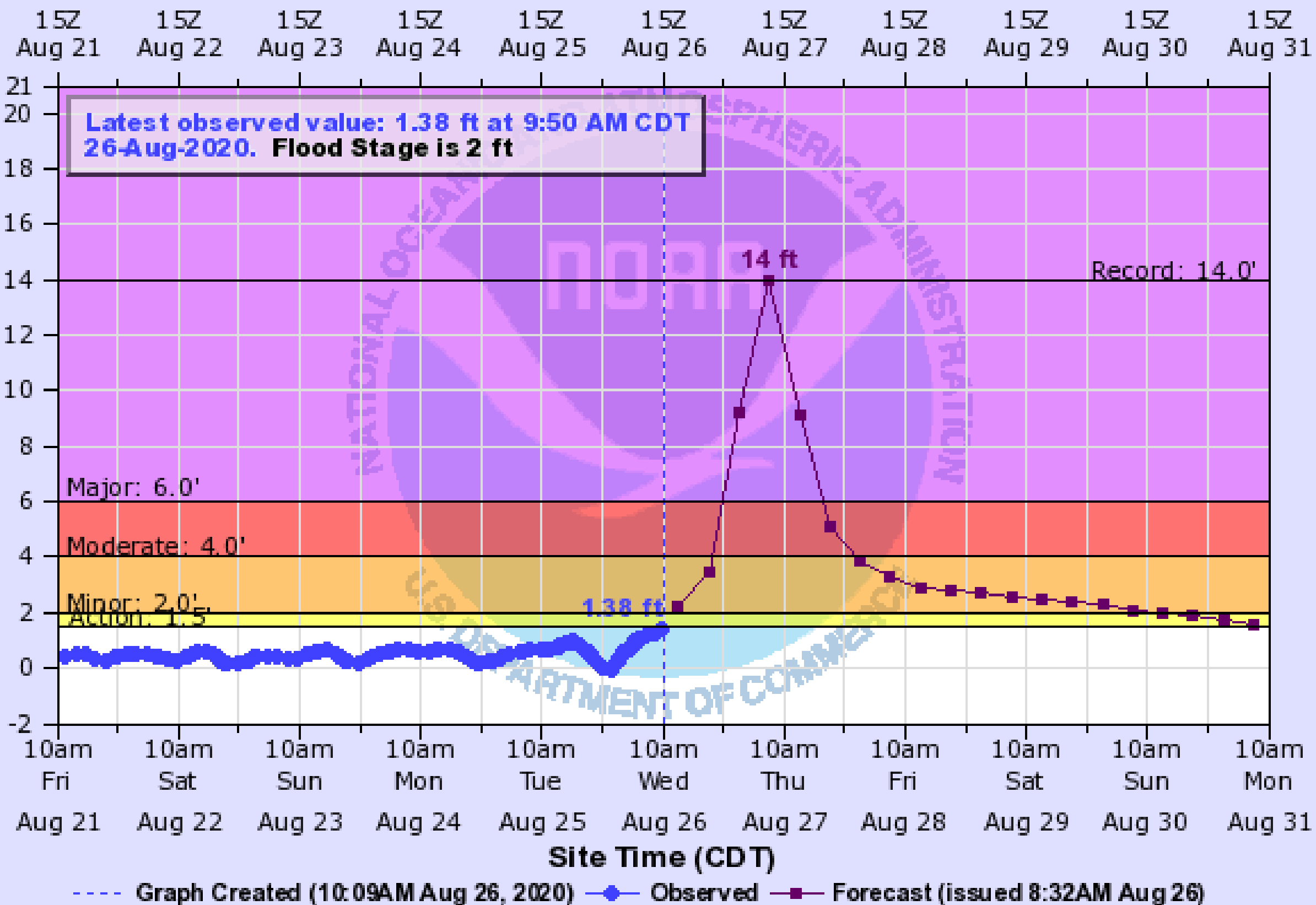
Hurricane Laura



Lake Charles
WEATHER FORECAST OFFICE

CALCASIEU RIVER AT WHITE OAK PARK

Universal Time (UTC)

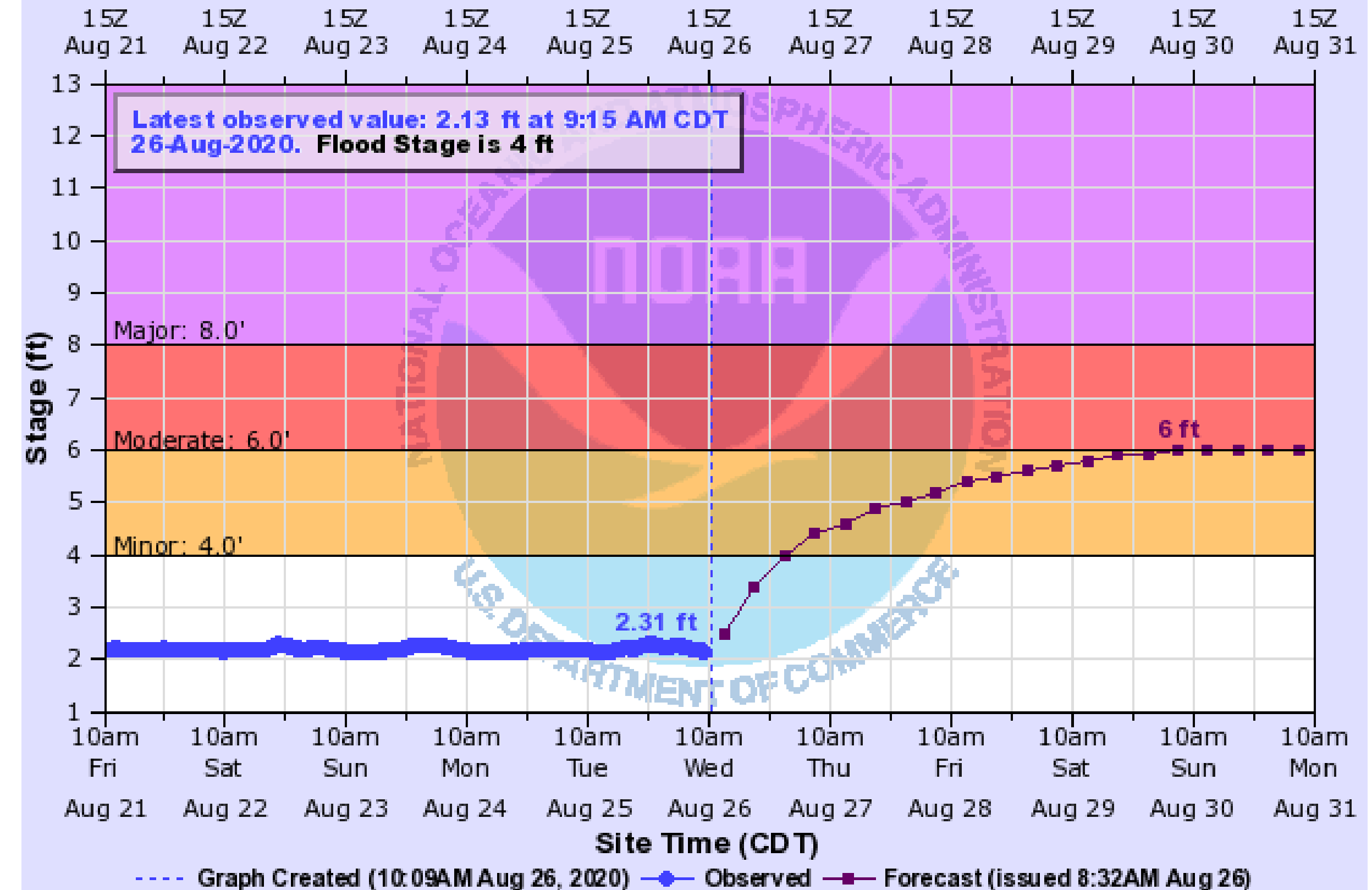


CWOL1(plotting HGIRR) "Gage 0" Datum: 0'

Observations courtesy of Calcasieu Parish Police Jury

MERMENTAU RIVER AT MERMENTAU

Universal Time (UTC)



MRML1(plotting HGIRG) "Gage 0" Datum: -0.58'

Observations courtesy of US Geological Survey

River Flooding Expected

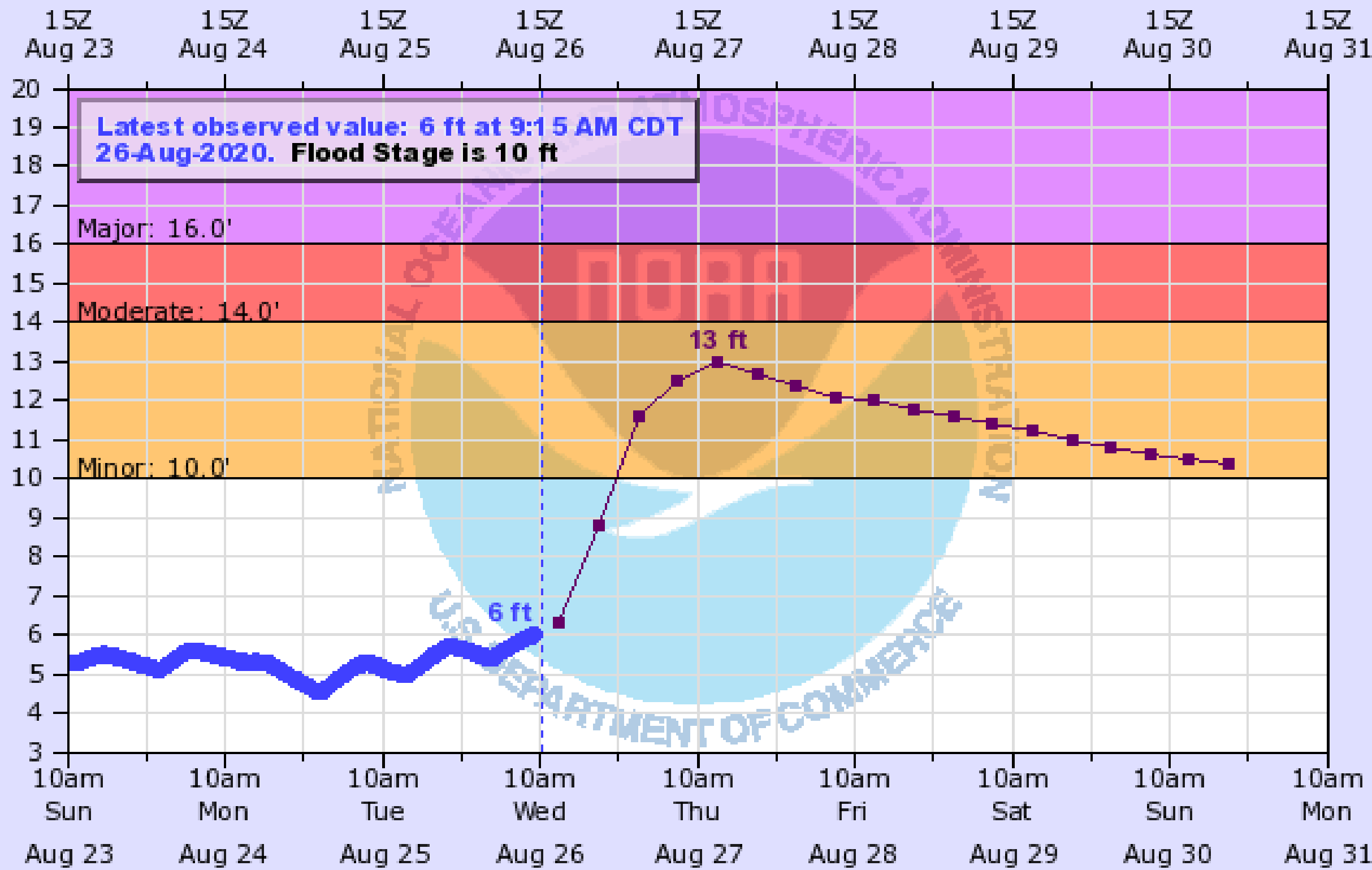
Hurricane Laura



Lake Charles
WEATHER FORECAST OFFICE

VERMILION RIVER AT LAFAYETTE - SURREY STREET

Universal Time (UTC)



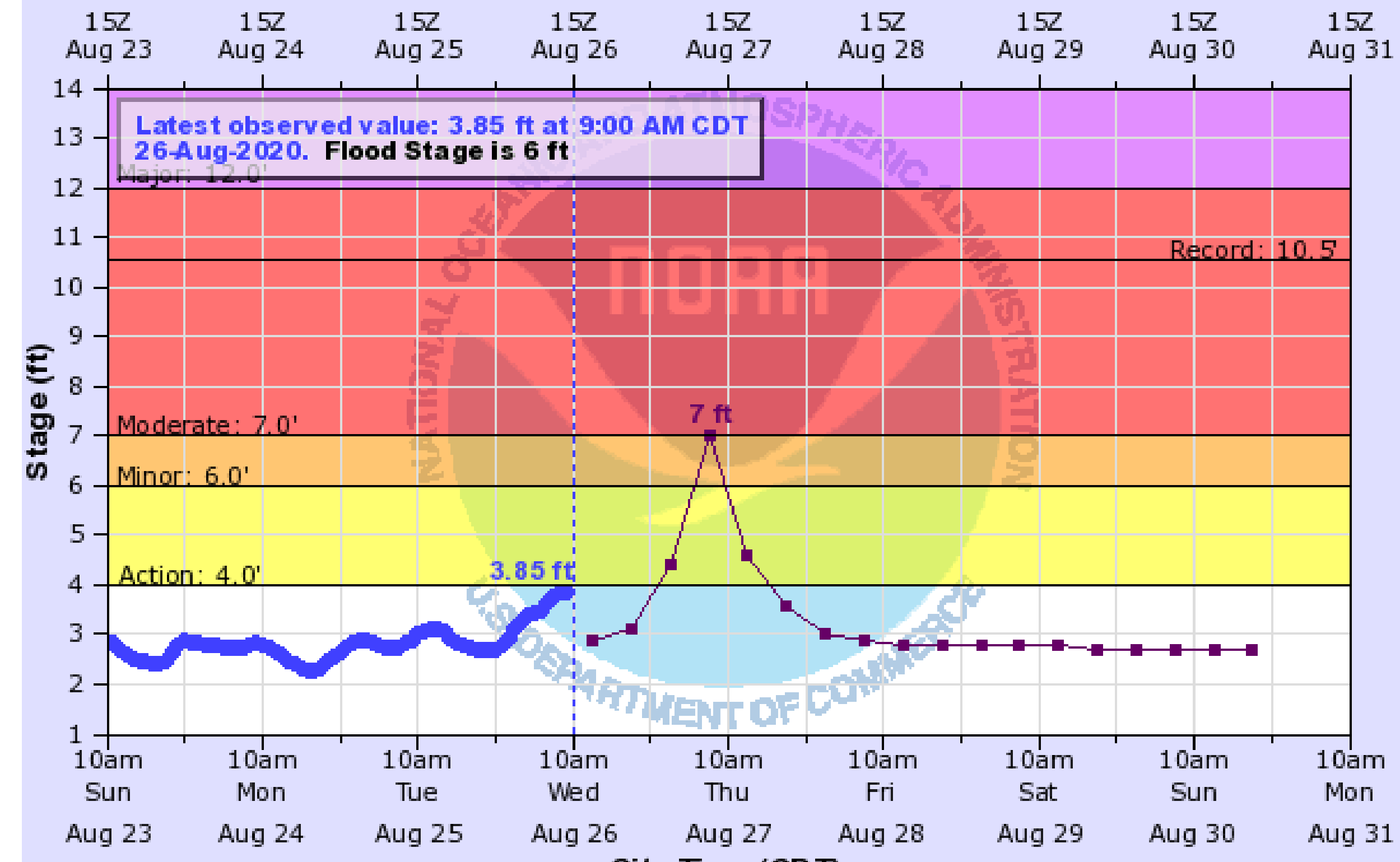
--- Graph Created (10:09AM Aug 26, 2020) —●— Observed —■— Forecast (issued 7:54PM Aug 25)

VLSL1(plotting HGIRG) "Gage 0" Datum: -2.74'

Observations courtesy of US Geological Survey

ATCHAFALAYA RIVER AT MORGAN CITY

Universal Time (UTC)



--- Graph Created (10:09AM Aug 26, 2020) —●— Observed —■— Forecast (issued 7:59PM Aug 25)

MCGL1(plotting HGIRG) "Gage 0" Datum: 0'

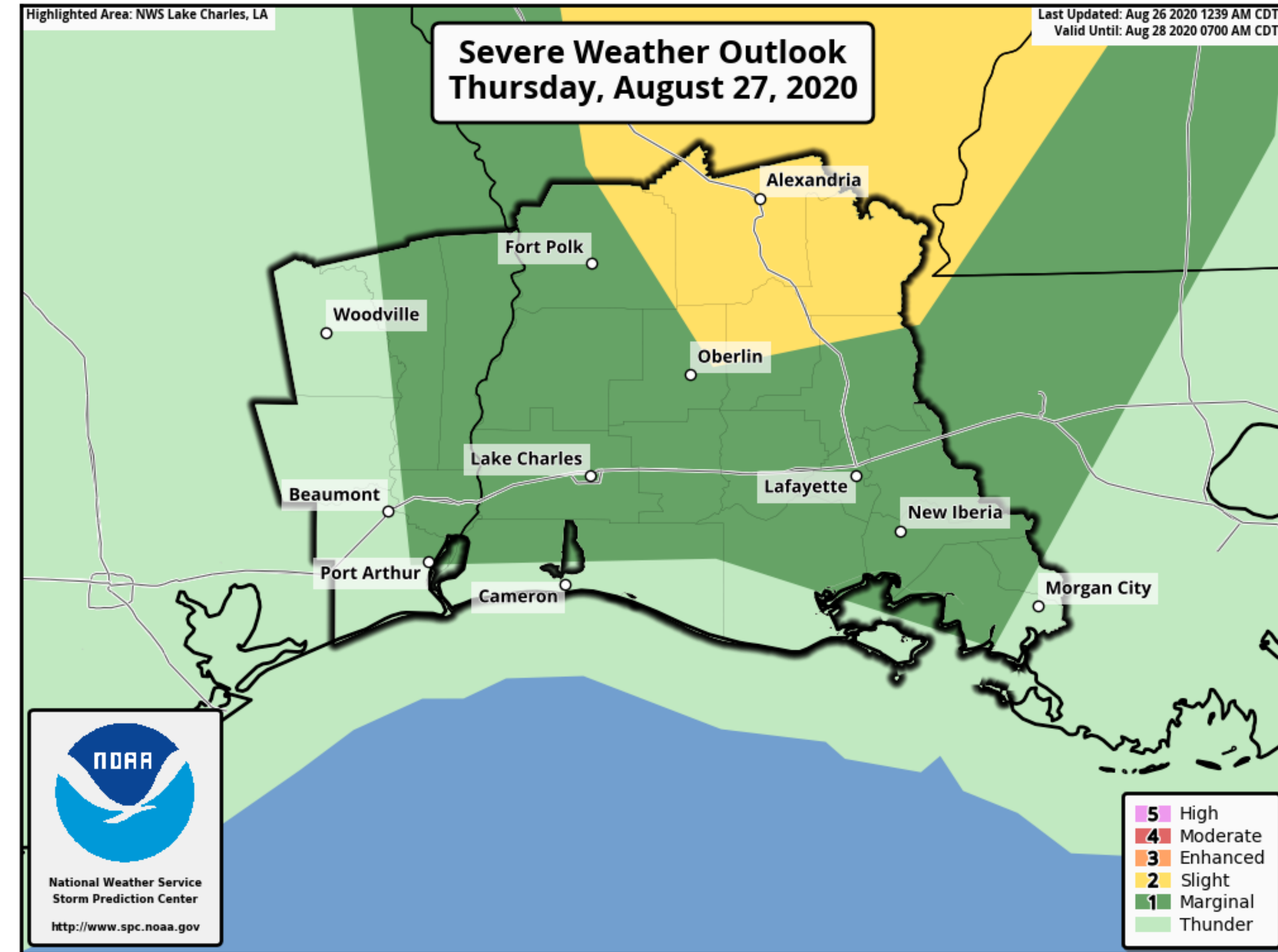
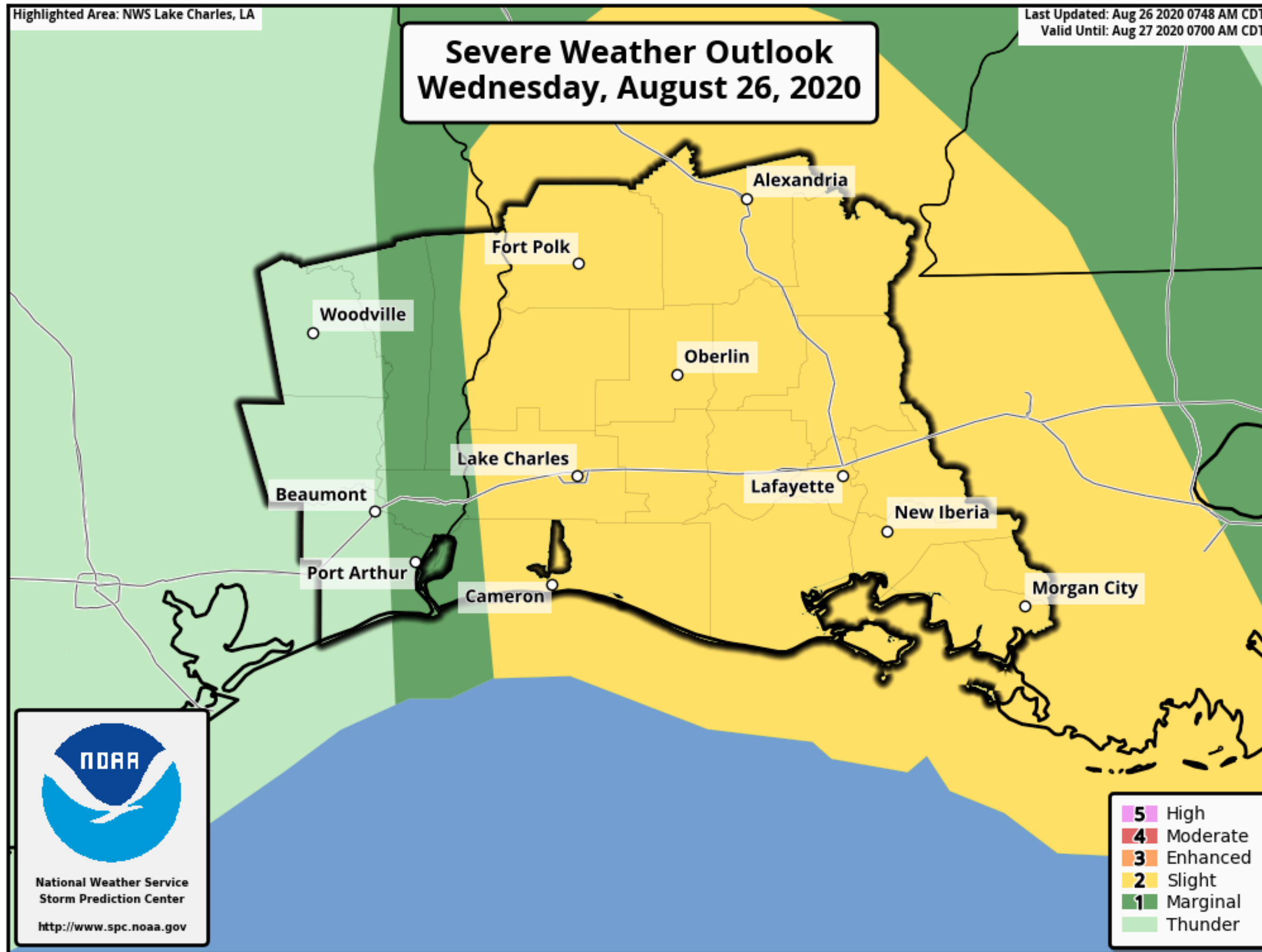
Observations courtesy of U.S. Army Corps of Engineers

Tornado Forecast

Hurricane Laura



Lake Charles
WEATHER FORECAST OFFICE



As rain bands start to approach the coast, isolated tornadoes will be possible, starting this afternoon and continuing tonight, and extending into Thursday.

Potential Weather Impacts

Hurricane Laura

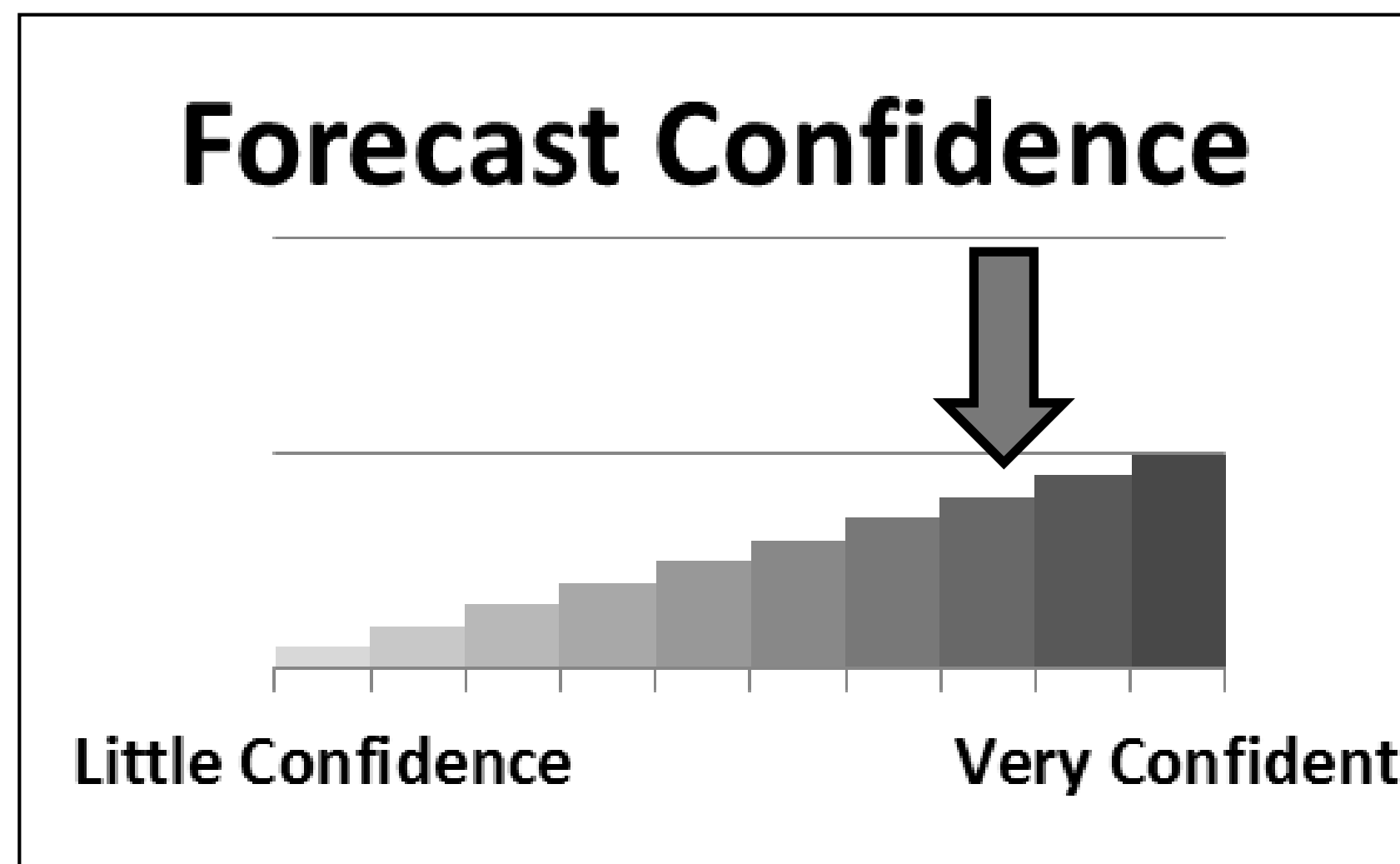


Lake Charles
WEATHER FORECAST OFFICE

- **Winds:** Tropical Storm force winds start today and could last 12-20 hours into Thursday. Hurricane force winds will start early Thursday and end Thursday afternoon and could last 4-8 hours. Expect widespread power outages, trees downed, and homes and businesses damaged.
- **Storm Surge:** At the coast, water will be 12 to 18 feet above ground level. Storm surge will back up rivers and bayous and flood over 30 miles inland. Catastrophic and life threatening flooding is expected.
- **Rainfall:** 5 to 10 inches with locally 15 inches of rain is expected starting today into Thursday. This rainfall will have a hard time draining due to the storm surge. This will result in flooded roads and water rescues will be necessary if people are on the road or stay in vulnerable locations.
- **Tornadoes:** Tornadoes will be possible in the eyewall as the hurricane approaches the coast, as well as outer rain bands starting today into Thursday.



Major, catastrophic damage is expected across parts of southeast Texas and southwest Louisiana due to storm surge, hurricane force winds, heavy rainfall, and tornadoes.



We have medium to high confidence in the track and intensity of Laura.