



JEFFERSON COUNTY PURCHASING DEPARTMENT
Deborah L. Clark, Purchasing Agent

1149 Pearl Street
1st Floor, Beaumont, TX 77701

OFFICE MAIN: (409) 835-8593
FAX: (409) 835-8456

IFB NUMBER: IFB 22-073/JW
IFB TITLE: Main Terminal HVAC Rehabilitation at the Jack Brooks Regional Airport
IFB DUE BY: 11:00 AM CT, Wednesday, Friday, 15, 2023
ADDENDUM NO.: 1
ISSUED (DATE): January 31, 2023

Addendum to IFB

To Bidder: This Addendum is an integral part of the IFB package under consideration by you as a Bidder in connection with the subject matter herein identified. Jefferson County deems all sealed bids to have been proffered in recognition and consideration of the entire IFB Specifications Package – *including all addenda*. For purposes of clarification, **receipt of this present Addendum by a Bidder should be evidenced by returning it (signed) as part of the Bidder’s sealed bid submission.** If the bid submission has already been received by the Jefferson County Purchasing Department, Bidder should return this addendum in a separate sealed envelope, clearly marked with the IFB Title, IFB Number, and IFB Opening Date and Time, as stated above.

Reason for Issuance of this Addendum: CLARIFICATIONS

The information included herein is hereby incorporated into the documents of this present bid matter and supersedes any conflicting documents or portion thereof previously issued.

Receipt of this Addendum is hereby acknowledged by the undersigned Respondent:

ATTEST:

Witness

Witness

Approved by _____ Date: _____

Authorized Signature (Respondent)

Title of Person Signing Above

Typed Name of Business or Individual

Address



JEFFERSON COUNTY PURCHASING DEPARTMENT
Deborah L. Clark, Purchasing Agent

1149 Pearl Street
1st Floor, Beaumont, TX 77701

OFFICE MAIN: (409) 835-8593
FAX: (409) 835-8456

Invitation for Bid (IFB 22-073/JW)
Main Terminal HVAC Rehabilitation at the Jack Brooks Regional Airport
ADDENDUM NO. 1

CLARIFICATIONS

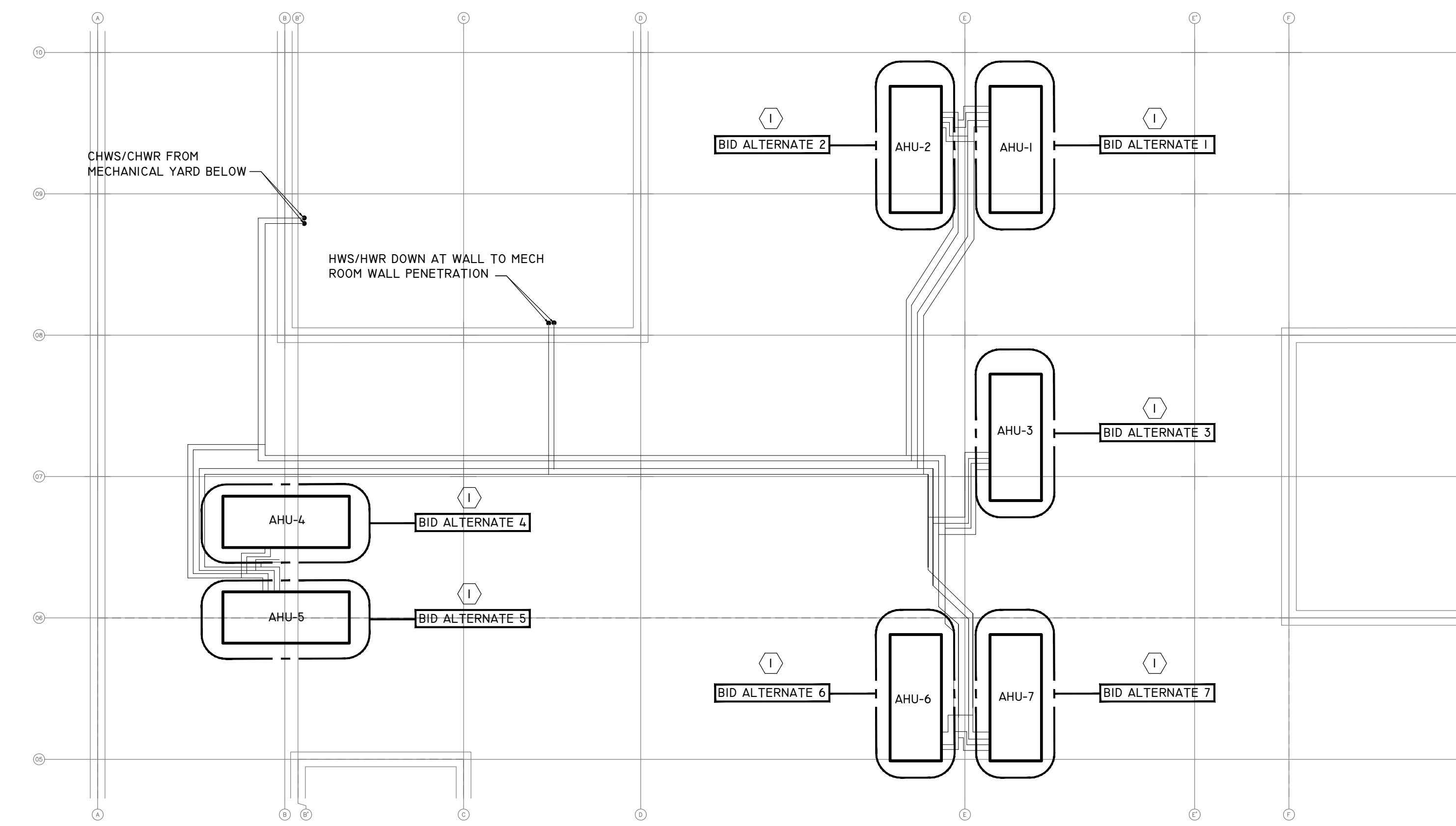
1. There is not a Bid Bond Form included in the specifications. A standard bid bond issued by the bond provider shall suffice.
2. Per pages 4 and 31 of the bid specifications:
BID SUBMISSIONS: One (1) Original and Two (2) Bid Copies; with all copies to include a Completed Copy of this specifications packet, drawings, and project manuals IN THEIR ENTIRETY. Technical Specifications/Project manuals, and drawings -only- may be submitted as double-sided copies.
Additional Note: Drawings may be sized to fit and submitted as 8X11 copies.
3. Project is in an operating airport terminal and under the jurisdiction of the FAA.
4. All applicable OSHA rules will apply to this project.
5. Portion of the project is under TSA control. All TSA requirements will be in place during flight boarding.
6. Project Superintendent: A full-time experienced and qualified in this type of project is required. The superintendent shall be on-site at all times that work is in progress.
7. Daily cleanup is a must on this project.
8. New boiler will require a permit and inspection by TDLR. All costs for the same shall be paid by the contractor.
9. Provide a carbon monoxide monitoring sensor within the existing boiler room and interlock with the new boiler to disable burners upon detection of carbon monoxide concentrations exceeding 50 PPM. Carbon monoxide sensor shall be a manual reset type and fail-safe on the loss of power.
10. Enclosed you will find drawing M2.03A. Air handler units 1 – 7 are to be replaced per Alternate #1. (See Addendum No. 1: Attachment A)

End of Addendum 1

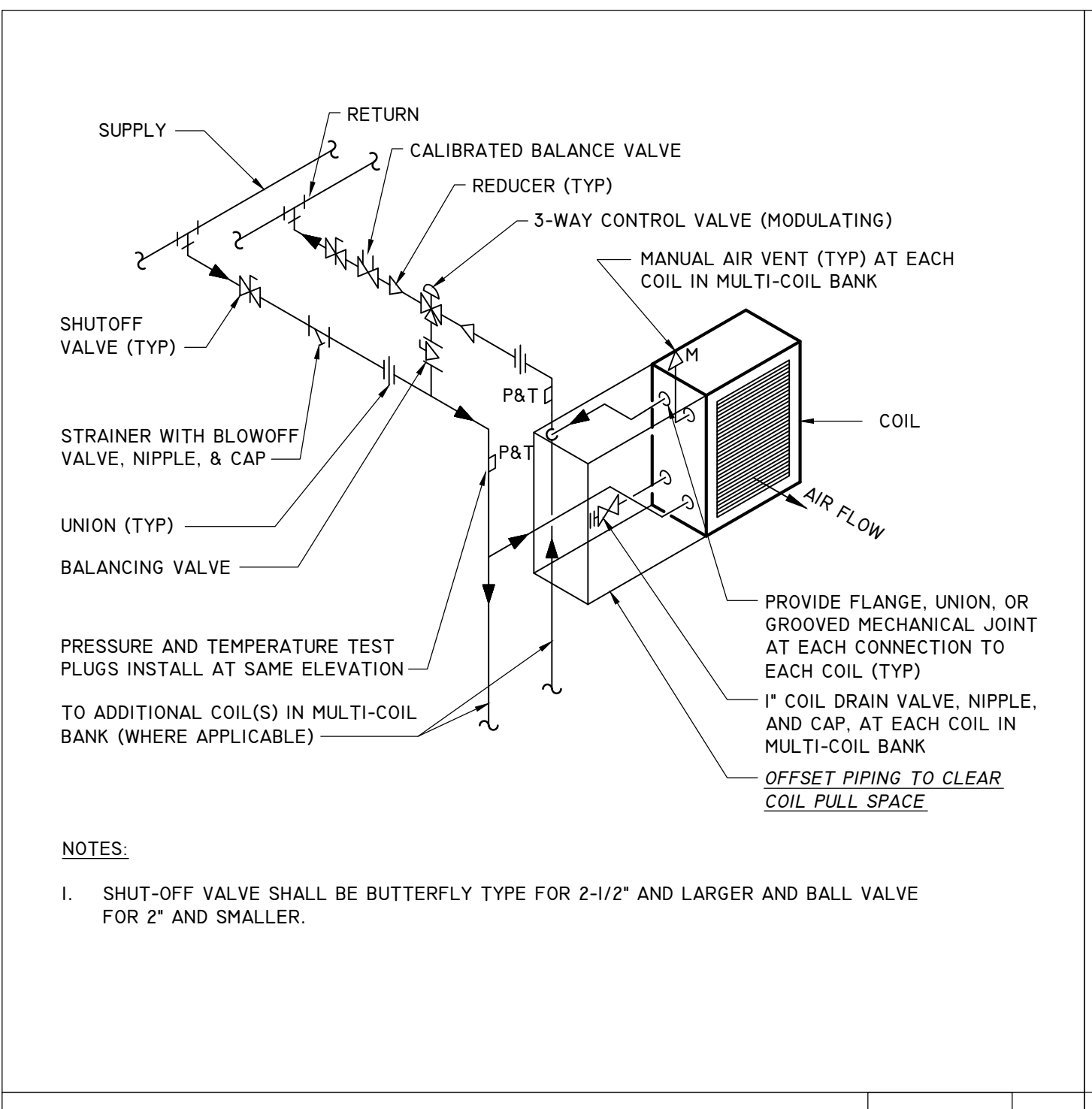
AIR HANDLING UNIT SCHEDULE

PROJECT BID	UNIT NO.	SERVICE	LOCATION	TOTAL AIRFLOW (CFM)	OUTSIDE AIR FLOW (CFM)	SUPPLY FAN DATA				RETURN FAN DATA				COOLING COIL						HEATING COIL						MANUFACTURER	NOTES									
						CAPACITY CONTROL		E.S.P. (IN. WG.)	HP	VOLTS/PH/Hz	CAPACITY CONTROL		E.S.P. (IN. WG.)	HP	COOLING CAPACITY		AIR DATA				WATER DATA		HEATING CAPACITY		AIR DATA				WATER DATA							
						RANGE %	TYPE				RANGE %	TYPE			TOT. CAPACITY (MBH)	SENS. CAPACITY (MBH)	MAX VELOCITY (FPM)	EAT (°F) DB	WB	LAT (°F) DB	WB	MAX P.D. (IN. WG)	EWT/LWT (°F)	GPM	MAX P.D. (FT HD)			TOT. CAPACITY (BTUH)	MAX VELOCITY (FPM)	EAT (°F) DB	LAT (°F) DB	MAX P.D. (IN. WG)	EWT/LWT (°F)	GPM	MAX P.D. (FT HD)	
BID ALTERNATE-1	AHU-1	TICKET LOBBY	ROOF	6,600	1,175	30-100	VFD	1.25	7.5	480/3/60	30-100	VFD	.38	2.0	480/3/60	233.0	163.1	500	80	67	52.9	52.7	1.5	44/58	4.0	15.0	213,840	500	60	90	1.5	160/140	21.5	15.0	TRANE	ALL
BID ALTERNATE-2	AHU-2	BAGGAGE	ROOF	6,000	1,115	30-100	VFD	1.25	7.5	480/3/60	30-100	VFD	.38	3.0	480/3/60	252.4	161.1	500	80	67	52.9	52.7	1.5	44/58	36.0	15.0	194,400	500	60	90	1.5	160/140	19.5	15.0	TRANE	ALL
BID ALTERNATE-3	AHU-3	SECURITY	ROOF	6,450	1,345	30-100	VFD	1.25	7.5	480/3/60	30-100	VFD	.38	2.0	480/3/60	230.9	157.8	500	80	67	52.9	52.7	1.5	44/58	4.0	15.0	208,980	500	60	90	1.5	160/140	21.0	15.0	TRANE	ALL
BID ALTERNATE-4	AHU-4	DEPARTURE	ROOF	6,250	1,710	30-100	VFD	1.25	7.5	480/3/60	30-100	VFD	.38	3.0	480/3/60	243.0	152.9	500	80	67	53.4	53.2	1.5	44/58	36.0	15.0	202,500	500	60	90	1.5	160/140	20.5	15.0	TRANE	ALL
BID ALTERNATE-5	AHU-5	TENANT SOUTH	ROOF	4,000	800	30-100	VFD	1.25	7.5	480/3/60	30-100	VFD	.38	2.0	480/3/60	150.2	105.2	500	80	67	53.8	52.6	1.5	44/58	24.9	15.0	129,600	500	60	90	1.5	160/140	13.0	15.0	TRANE	ALL
BID ALTERNATE-6	AHU-6	TENANT CENTRAL	ROOF	7,200	2,720	30-100	VFD	1.25	7.5	480/3/60	30-100	VFD	.50	3.0	480/3/60	364.6	216.9	500	80	67	52.2	52.1	1.5	44/58	52.1	15.0	233,280	500	60	90	1.5	160/140	23.5	15.0	TRANE	ALL
BID ALTERNATE-7	AHU-7	TENANT NORTH	ROOF	8,400	2,380	30-100	VFD	1.25	10.0	480/3/60	30-100	VFD	.38	5.0	480/3/60	374.2	238.1	500	80	67	53.0	52.8	1.5	44/58	53.5	15.0	272,160	500	60	90	1.5	160/140	27.0	15.0	TRANE	ALL

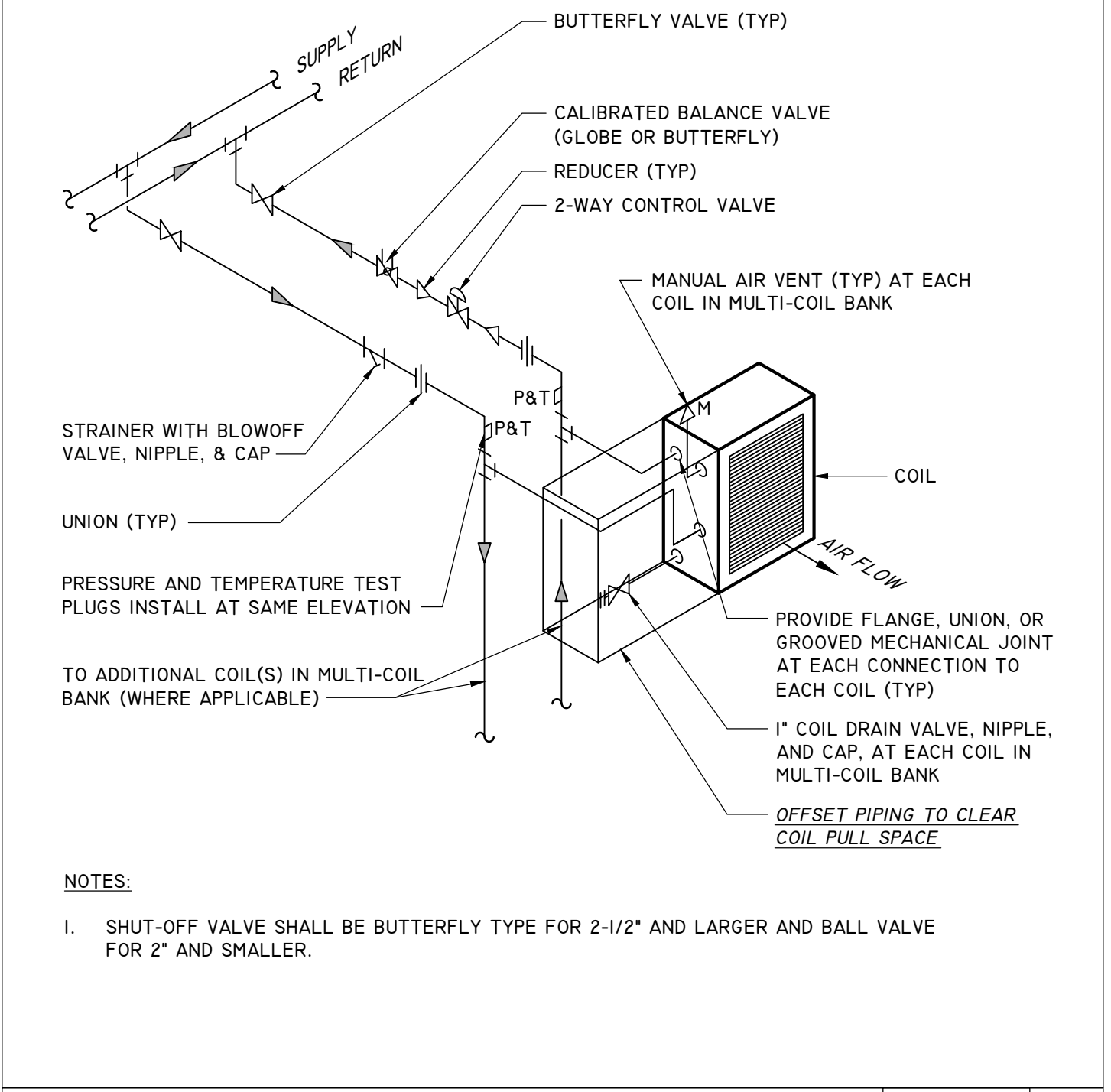
NOTES:
 1. PROVIDE ROOF MOUNTED UNITS SUITABLE FOR EXTERIOR DUTY WITH 2 INCH DOUBLE WALL FOAM INJECTED CASINGS.
 2. PROVIDE UNITS WITH INSULATED CURB ADAPTERS. FIELD VERIFY DIMENSIONS OF EXISTING ROOF CURBS.
 3. DESIGN UNITS AND CURB ADAPTERS FOR 149 MPH WIND LOAD, EXPOSURE C, AND RISK CATEGORY IV IN ACCORDANCE WITH ASCE 7-10 AND IBC REQUIREMENTS.
 4. PROVIDE UNITS WITH MERV-13 (2") DEEP AIR FILTERS.
 5. PROVIDE UNITS WITH PREMIUM EFFICIENCY INVERTER DUTY FAN MOTORS AND VARIABLE FREQUENCY DRIVES.
 6. PROVIDE ASHRAE 62.1 COMPLIANT DRAIN PANS WITH WATER SENSING DEVICE.
 7. PROVIDE UNIT WITH MOTORIZED LOW LEAKAGE OUTSIDE AIR AND RETURN AIR DAMPERS.
 8. PROVIDE IONIZATION SMOKE DETECTOR IN THE SUPPLY SIDE FOR ALL AIR HANDLERS WITH CAPACITIES ABOVE 2000 CFM AND RECONNECT TO EXISTING FIRE ALARM SYSTEM.



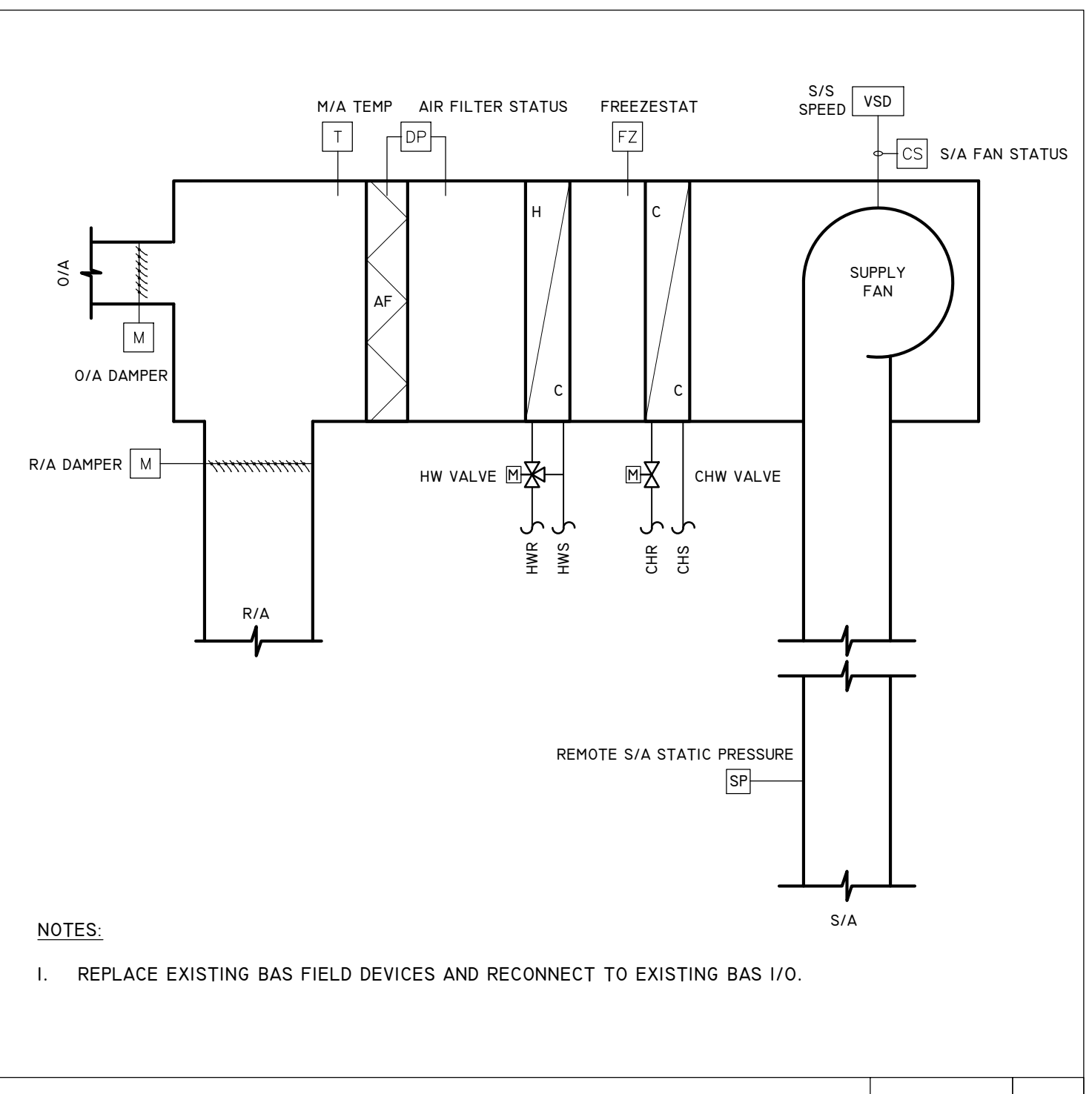
01 PARTIAL ROOF PLAN - HVAC
 SCALE: 1/16"=1'-0"



3-WAY AHU HEATING WATER COIL PIPING DETAIL NOT TO SCALE 3



2-WAY AHU CHILLED WATER COIL PIPING DETAIL NOT TO SCALE 2



VARIABLE VOLUME AHU CONTROL DIAGRAM NOT TO SCALE 1

KEYED NOTES:
 1. REPLACE AIR HANDLING UNIT AND ALL ASSOCIATED ACCESSORIES INCLUDING PIPING CONNECTIONS, ELECTRICAL AND CONTROLS. REFERENCE DETAILS.

GENERAL NOTES:
 1. PROVIDE AABC OR NEBB CERTIFIED AIR AND WATER BALANCE FOR REPLACEMENT AHU'S.
 2. COMMISSION REPLACEMENT AHU'S AND BAS CONTROLS PER ASHRAE STANDARDS.

Infrastructure Associates
 INFRASTRUCTURE ASSOCIATES, INC.
 617 RICHMOND AVENUE, SUITE 200
 HOUSTON, TEXAS 77057
 TSP# REGISTRATION NO. F-4506
 (713) 622-0120 PH. (713) 622-0557 FAX
 WWW.IAHOUSTON.COM

THESE DRAWINGS ARE INSTRUMENTS OF SERVICE AND ARE THE PROPERTY OF SIGMA ENGINEERS, INC. ALL DESIGNS AND INFORMATION HEREIN ARE FOR USE ON THE SPECIFIED PROJECT AND SHALL NOT BE USED OTHERWISE WITHOUT THE WRITTEN CONSENT OF SIGMA ENGINEERS, INC. REGISTRATION # F-993845
 COPYRIGHT 2022 BY SIGMA ENGINEERS, INC. ALL RIGHTS RESERVED.

SIGMA ENGINEERS
 Innovative Solutions | Solid Designs
 4099 Calder Avenue
 Beaumont, Texas 77706
 Phone (409) 898-1001
 www.sigmaengineers.com

JEFFERSON COUNTY REGIONAL AIRPORT
 MAIN TERMINAL HVAC REVAMP
 5000 JERRY WARE DR.
 BEAUMONT, TEXAS

STATE OF TEXAS
 MATT A. FLUKINGER
 119970
 LICENSED PROFESSIONAL ENGINEER
 09/29/2022

ISSUED FOR
ISSUE FOR PERMIT
 09/14/2022
OWNER REVISION
 09/29/2022

KT, MA
 DESIGN BY
 MF, SK
 CHECKED BY
 MF, SK
 APPROVED BY

SHEET NUMBER
M2.03A
ROOF PLAN -
BID ALTERNATE
 22-413
 PROJECT NO.