



12141 Wickchester Lane  
Suite 200  
Houston, TX 77079  
TEL 713.491.8333  
FAX 713.395.5486  
[www.GarverUSA.com](http://www.GarverUSA.com)

---

## ADDENDUM NO. 2

**Date:** August 26, 2021  
**Project Name:** Airfield Marking Rehabilitation for the Jack Brooks Regional Airport  
**Owner:** Jefferson County, Texas  
**Owner Project No.:** IFB 21-052/JW  
**Garver Project No.** 20A12502

This addendum shall be a part of the Plans, Contract Documents and Specifications to the same extent as though it were originally included therein, and it shall supersede anything contained in the Plans, Contract Documents, and Specifications with which it might conflict. This addendum, including all attachments, shall become part of the Contract and all provisions of the Contract shall apply thereto, with exception of the items listed under "Other Project Information" at the end of this Addendum No. 2, which are supplements provided for the Contractor's convenience. The time provided for completion of the Contract has not been changed as noted in this addendum. Acknowledgement of receipt of this addendum must be noted in the appropriate section of the Bid Form and included with the Contract Documents.

A. Prospective Bidder Questions:

1. Below are the response to questions received by prospective bidders:
  - a. The Construction/Phasing plan sheets state that work within the runway RSA's will occur in the overnight hours. What will these hours be?
    - i. 10 pm - 6 am
  - b. What will be the available work hours outside the RSA's?
    - i. 8 am – 6 pm
  - c. Is water available on-site and will it free of charge?
    - i. The contractor shall coordinate with the airport for water access. The airport shall provide water as needed.
  - d. Since the site visit was cancelled, how many years of paint build-up can we expect?
    - i. According to the airport, the contractor should expect 3-5 years of paint build-up.
  - e. What is the process for the disposal of liquid waste from the paint removal process?
    - i. The contractor shall operate a vacuum truck at all times during marking removal, or any operation producing liquid waste, and shall dispose of it adequately and in accordance with local and national codes.

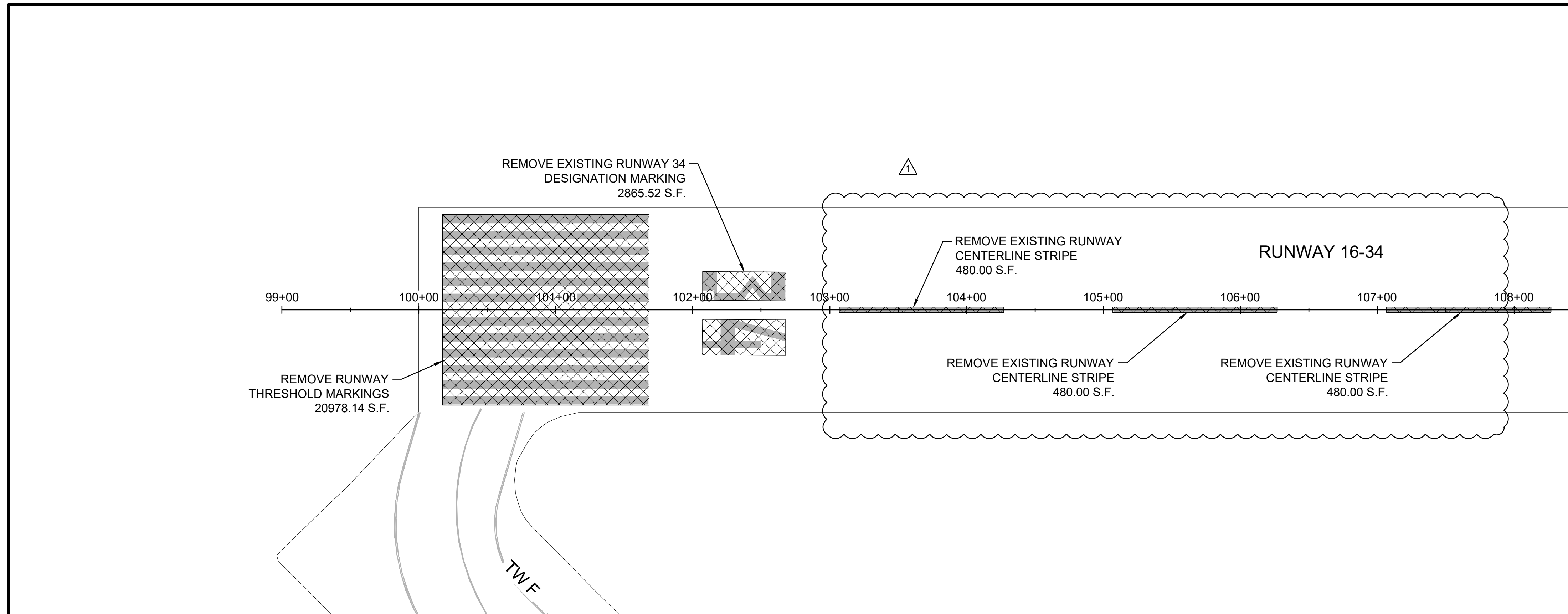
- f. According to Google Earth, the runway centerlines are 120 ft by 3ft for the white. On the plan sheets it says 120 ft by 18". What are the current centerlines measured at?
  - i. The existing runway centerlines are 120 ft by 3 ft. The proposed runway centerlines will be 120 ft by 1.5 ft white paint with 0.5 ft black outline. The removal quantity for the existing markings has been updated (see section B below) in this addendum.
- g. How did you determine the square feet measurement of 433.55 on the centerlines? What measurements did you use?
  - i. The removal quantity for the existing runway centerline markings has been corrected (see section B below) to 480 SF in this addendum. This accounts for the 120 ft by 3 ft of white markings with the 0.5 ft black outline.
- h. How did you determine the square feet measurement of 9359.52 on the aiming point? What measurements did you use?
  - i. The removal quantity for the existing aiming point markings has been corrected (see section B below) to 9362 SF in this addendum. This accounts for the 150 ft by 31 ft of white markings with the 0.5 ft black outline for the pair of markings.

## B. DRAWINGS

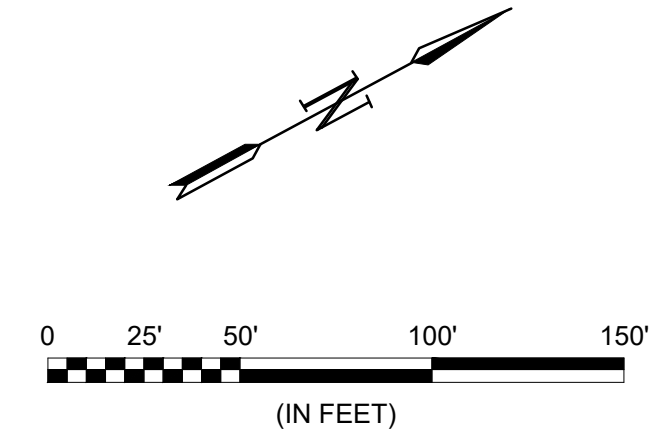
- 1. Remove the following drawings in their entirety, and replace with the same, attached hereto:
  - a. M-101 RUNWAY 16-34 MARKING REMOVAL PLAN I
  - b. M-102 RUNWAY 16-34 MARKING REMOVAL PLAN II
  - c. M-103 RUNWAY 16-34 MARKING REMOVAL PLAN III

END OF ADDENDUM NO. 2

File: L:\2020\20A12502 - BPT - RW 16-34 Marking Rehab\Drawings\BPT-AMR-M101.dwg Last Save: 8/26/2021 11:39 AM Last saved by: KKRutabana  
 Last plotted by: Rutabana, Ken K. Plot Size: AECrono.ctb Plot Scale: 1:1 Plot Date: 8/26/2021 11:40 AM Plotter used: \_DWG To PDF.pc3

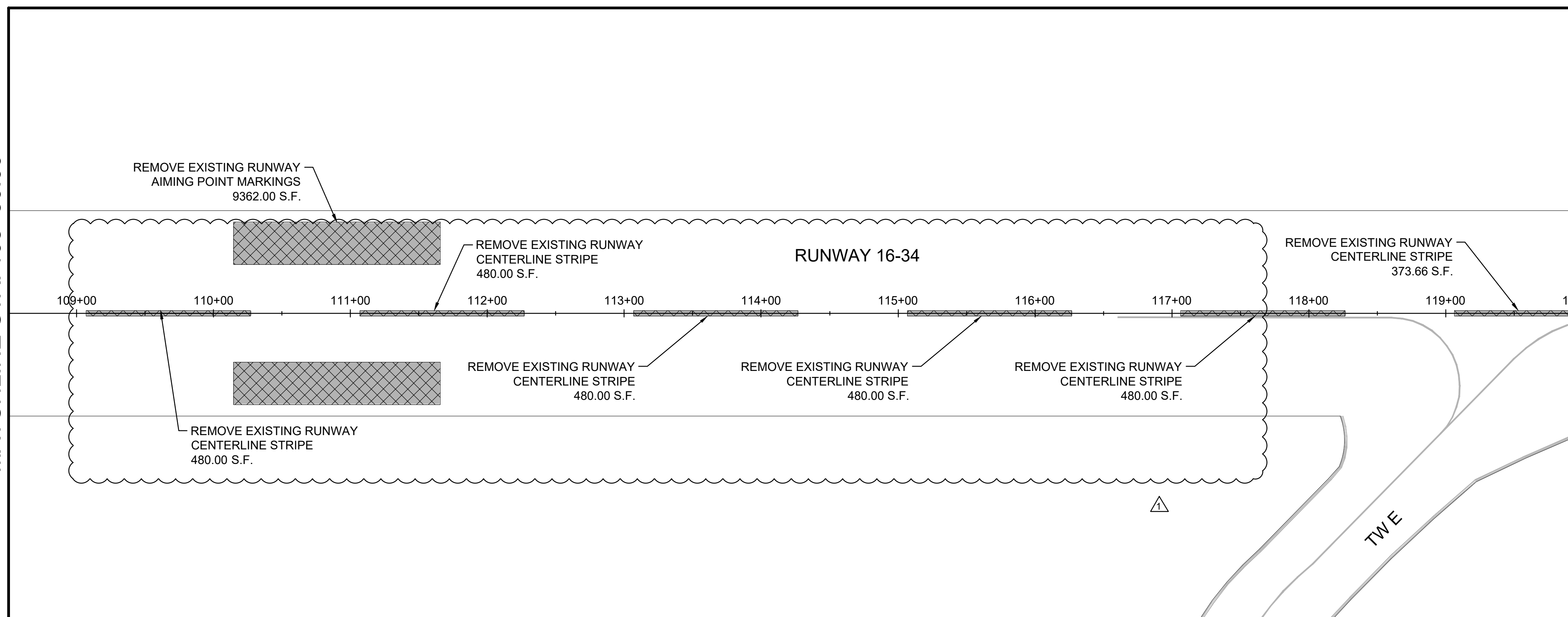


MATCHLINE STA. 108+50.00



LEGEND	
	PAVEMENT MARKING REMOVAL
	EXISTING PAVEMENT MARKINGS
	TAXIWAY LEAD-IN MARKING TO BE REMOVED

- NOTES:**
1. QUANTITIES REFERENCE THE CONSTRUCTION AREA INCLUDED ON THIS SHEET ONLY, UNLESS OTHERWISE NOTED.
  2. PAVEMENT MARKING REMOVAL METHOD SHALL NOT DAMAGE THE EXISTING CONCRETE SURFACE.
  3. ALL 6" BLACK OUTLINES ON EXISTING PAVEMENT MARKINGS SHALL BE REMOVED AS PART OF PAVEMENT MARKING REMOVAL.
  4. REMOVE MARKINGS IN BLOCKS AS SHOWN TO HELP ENSURE THE MARKING REMOVAL AREA IS OBSCURED.



MATCHLINE STA. 108+50.00

MATCHLINE STA. 120+00.00



© 2020 GARVER, LLC  
 THIS DOCUMENT, ALONG WITH THE IDEAS AND DESIGNS CONVEYED HEREIN, SHALL BE CONSIDERED INSTRUMENTS OF PROFESSIONAL SERVICE AND ARE PROPERTY OF GARVER, LLC. ANY USE, REPRODUCTION, OR DISTRIBUTION OF THIS DOCUMENT, ALONG WITH THE IDEAS AND DESIGN CONTAINED HEREIN, IS PROHIBITED UNLESS AUTHORIZED IN WRITING BY GARVER, LLC OR EXPLICITLY ALLOWED IN THE GOVERNING PROFESSIONAL SERVICES AGREEMENT FOR THIS WORK.

REGISTRATION NO. F-5713



Digitally Signed 08/26/2021

REV.	DATE	DESCRIPTION	BY
1	08/26/21	ADDENDUM NO. 2	KKR



JACK BROOKS REGIONAL AIRPORT  
 REGIONAL AIRPORT  
 JEFFERSON COUNTY, TEXAS  
 AIRFIELD MARKING REHABILITATION

RUNWAY 16-34  
 MARKING REMOVAL  
 PLAN I

JOB NO.: 20A12502  
 DATE: JUL 2021  
 DESIGNED BY: JAH  
 DRAWN BY: JAH

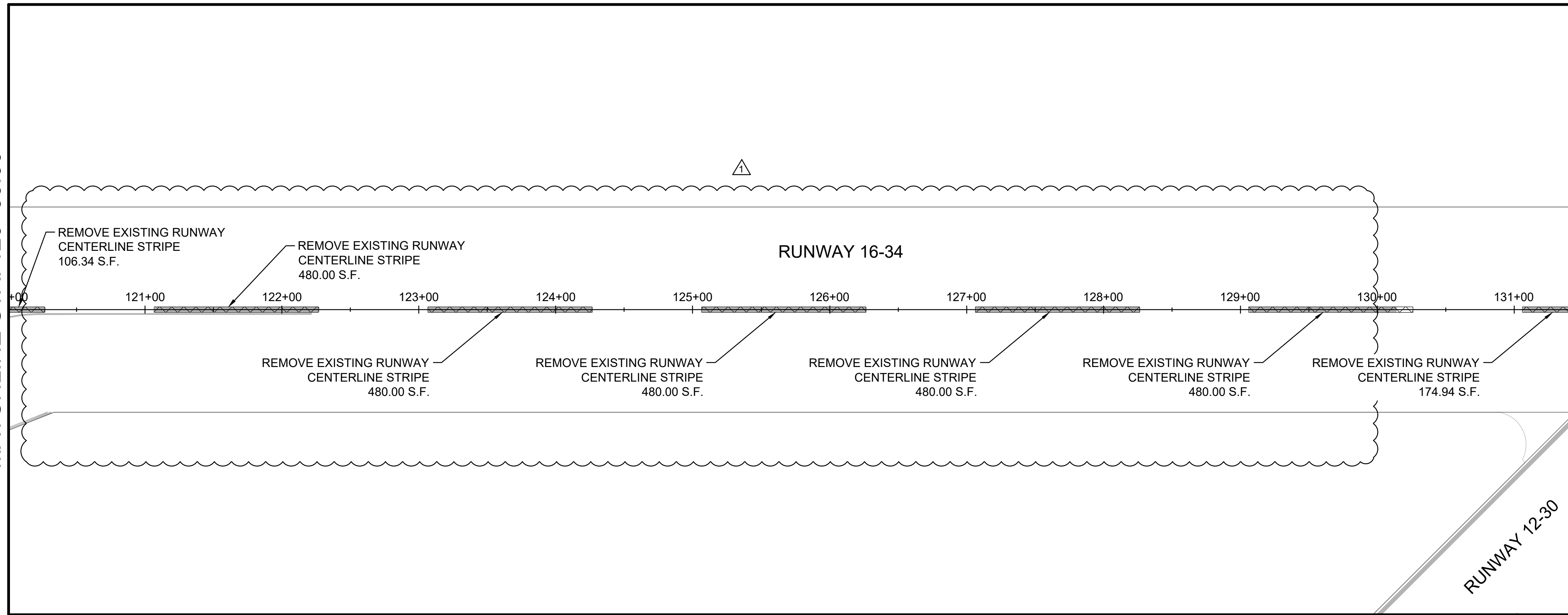
BAR IS ONE INCH ON ORIGINAL DRAWING  
 IF NOT ONE INCH ON THIS SHEET, ADJUST SCALES ACCORDINGLY.

DRAWING NUMBER  
**M-101**  
 SHEET NUMBER  
**16**

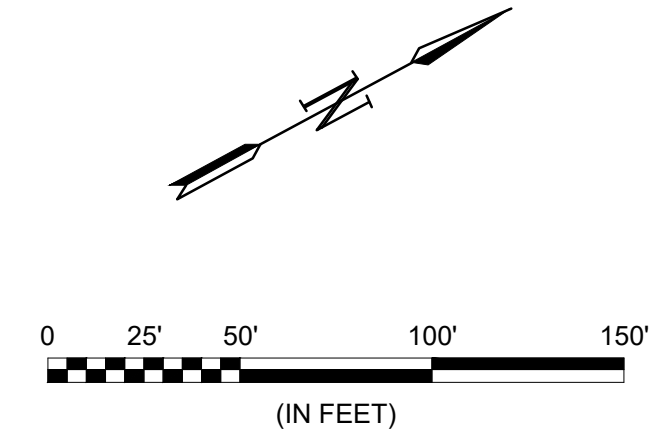


File: L:\2020\20A12502 - BPT - RW 16-34 Marking Rehab\Drawings\BPT-AMR-M101.dwg Last Save: 8/26/2021 11:39 AM Last saved by: KKR\Rubabana  
 Last Plotted By: Rubabana, Ken K. Plot Size: AECrono.ctb Plot Scale: 1:1 Plot Date: 8/26/2021 11:40 AM Plotter Used: \_DWG To PDF.pc3

MATCHLINE STA. 120+00.00



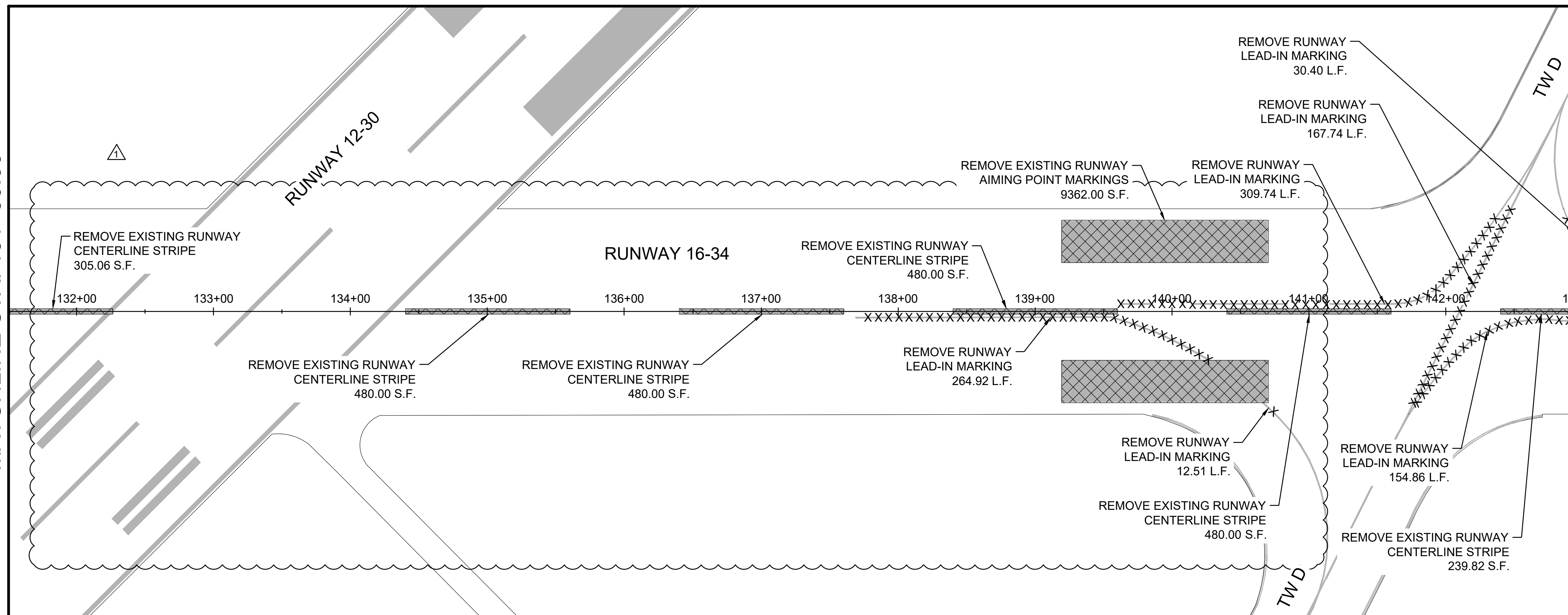
MATCHLINE STA. 131+50.00



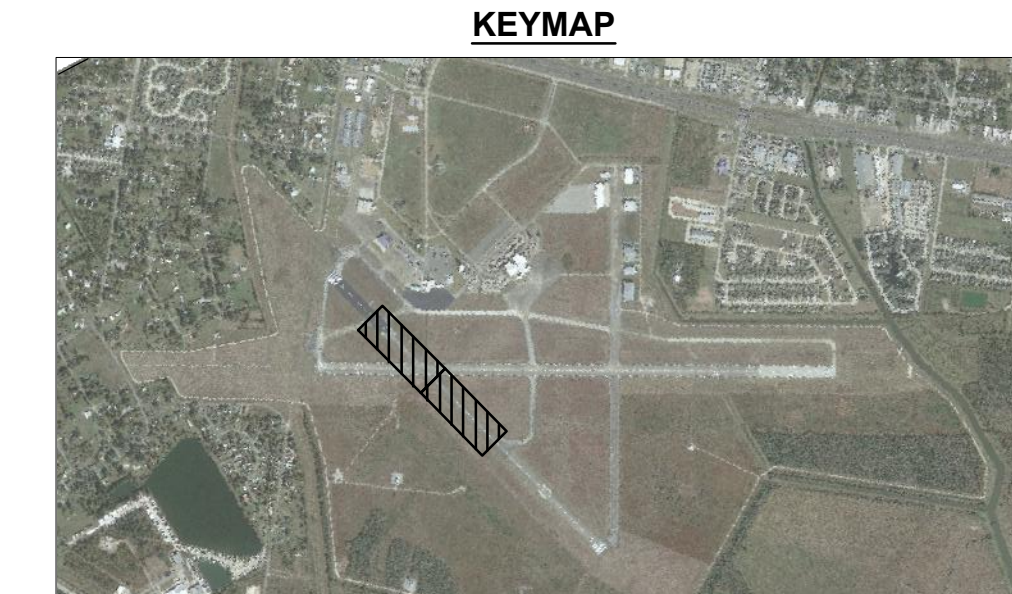
LEGEND	
	PAVEMENT MARKING REMOVAL
	EXISTING PAVEMENT MARKINGS
	TAXIWAY LEAD-IN MARKING TO BE REMOVED

- NOTES:**
1. QUANTITIES REFERENCE THE CONSTRUCTION AREA INCLUDED ON THIS SHEET ONLY, UNLESS OTHERWISE NOTED.
  2. PAVEMENT MARKING REMOVAL METHOD SHALL NOT DAMAGE THE EXISTING CONCRETE SURFACE.
  3. ALL 6" BLACK OUTLINES ON EXISTING PAVEMENT MARKINGS SHALL BE REMOVED AS PART OF PAVEMENT MARKING REMOVAL.
  4. REMOVE MARKINGS IN BLOCKS AS SHOWN TO HELP ENSURE THE MARKING REMOVAL AREA IS OBSCURED.

MATCHLINE STA. 131+50.00



MATCHLINE STA. 143+00.00



© 2020 GARVER, LLC  
 THIS DOCUMENT, ALONG WITH THE IDEAS AND DESIGNS CONVEYED HEREIN, SHALL BE CONSIDERED INSTRUMENTS OF PROFESSIONAL SERVICE AND ARE PROPERTY OF GARVER, LLC. ANY USE, REPRODUCTION, OR DISTRIBUTION OF THIS DOCUMENT, ALONG WITH THE IDEAS AND DESIGN CONTAINED HEREIN, IS PROHIBITED UNLESS AUTHORIZED IN WRITING BY GARVER, LLC OR EXPLICITLY ALLOWED IN THE GOVERNING PROFESSIONAL SERVICES AGREEMENT FOR THIS WORK.

REGISTRATION NO. F-5713



Digitally Signed 08/26/2021

REV.	DATE	DESCRIPTION	BY
1	08/26/21	ADDENDUM NO. 2	KKR



JACK BROOKS REGIONAL AIRPORT  
 JEFFERSON COUNTY, TEXAS  
 AIRFIELD MARKING REHABILITATION

RUNWAY 16-34  
 MARKING REMOVAL  
 PLAN II

JOB NO.: 20A12502  
 DATE: JUL 2021  
 DESIGNED BY: JAH  
 DRAWN BY: JAH

BAR IS ONE INCH ON ORIGINAL DRAWING  
 IF NOT ONE INCH ON THIS SHEET, ADJUST SCALES ACCORDINGLY.

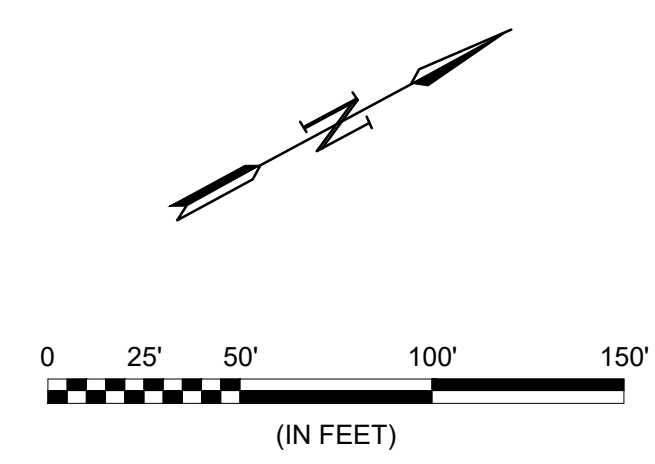
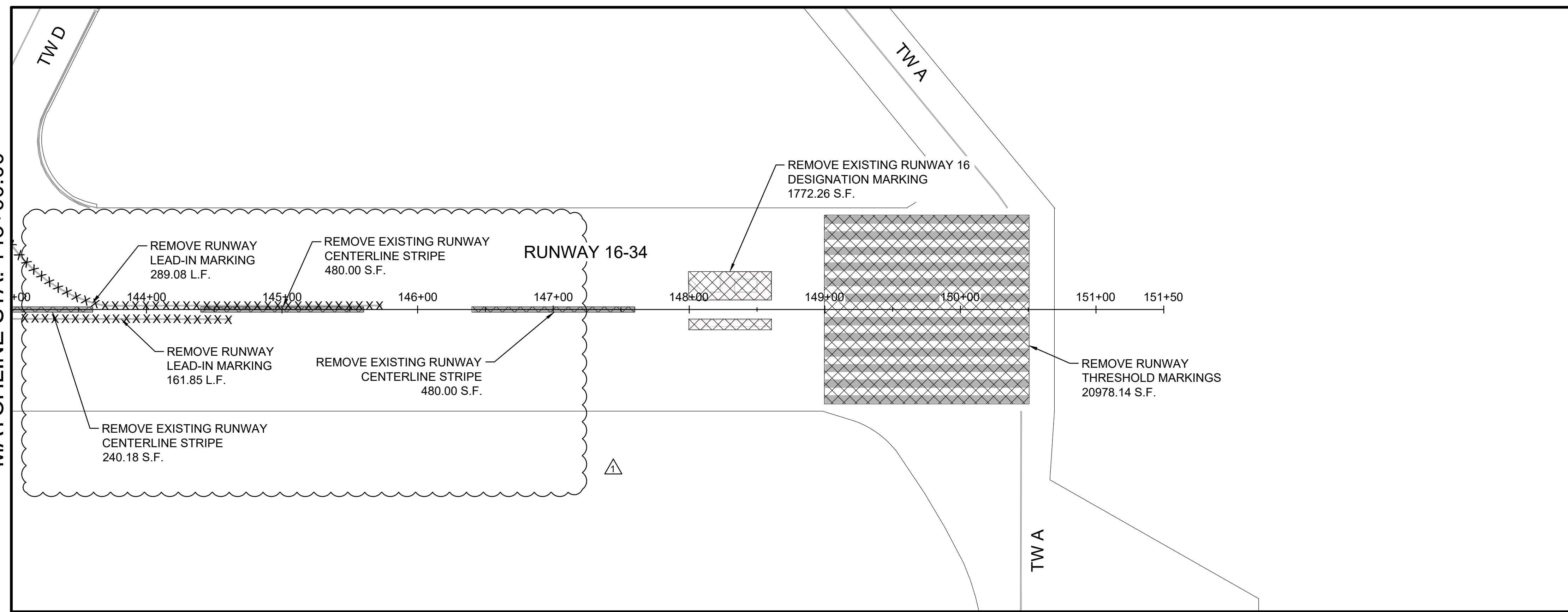
DRAWING NUMBER  
**M-102**

SHEET NUMBER  
**17**



File: L:\2020\20A12502 - BPT - RW 16-34 Marking Rehab\Drawings\BPT-AMR-M101.dwg Last Save: 8/26/2021 11:39 AM Last saved by: KKR\utabana  
 Last Plotted By: Rutabana, Ken K. Plot Style: AECmonochrome.ctb Plot Scale: 1:1 Plot Date: 8/26/2021 11:40 AM Plotter used: \_DWG To PDF.pc3

MATCHLINE STA. 143+00.00



LEGEND	
	PAVEMENT MARKING REMOVAL
	EXISTING PAVEMENT MARKINGS
	TAXIWAY LEAD-IN MARKING TO BE REMOVED

**NOTES:**

1. QUANTITIES REFERENCE THE CONSTRUCTION AREA INCLUDED ON THIS SHEET ONLY, UNLESS OTHERWISE NOTED.
2. PAVEMENT MARKING REMOVAL METHOD SHALL NOT DAMAGE THE EXISTING CONCRETE SURFACE.
3. ALL 6" BLACK OUTLINES ON EXISTING PAVEMENT MARKINGS SHALL BE REMOVED AS PART OF PAVEMENT MARKING REMOVAL.
4. REMOVE MARKINGS IN BLOCKS AS SHOWN TO HELP ENSURE THE MARKING REMOVAL AREA IS OBSCURED.



© 2020 GARVER, LLC  
 THIS DOCUMENT, ALONG WITH THE IDEAS AND DESIGNS CONVEYED HEREIN, SHALL BE CONSIDERED INSTRUMENTS OF PROFESSIONAL SERVICE AND ARE PROPERTY OF GARVER, LLC. ANY USE, REPRODUCTION, OR DISTRIBUTION OF THIS DOCUMENT, ALONG WITH THE IDEAS AND DESIGN CONTAINED HEREIN, IS PROHIBITED UNLESS AUTHORIZED IN WRITING BY GARVER, LLC OR EXPLICITLY ALLOWED IN THE GOVERNING PROFESSIONAL SERVICES AGREEMENT FOR THIS WORK.

REGISTRATION NO. F-5713



Digitally Signed 08/26/2021

REV.	DATE	DESCRIPTION	BY
△	08/26/21	ADDENDUM NO. 2	KKR



JACK BROOKS REGIONAL AIRPORT  
 JEFFERSON COUNTY, TEXAS  
 AIRFIELD MARKING REHABILITATION

RUNWAY 16-34  
 MARKING REMOVAL  
 PLAN III

JOB NO.: 20A12502  
 DATE: JUL 2021  
 DESIGNED BY: JAH  
 DRAWN BY: JAH

BAR IS ONE INCH ON ORIGINAL DRAWING  
 IF NOT ONE INCH ON THIS SHEET, ADJUST SCALES ACCORDINGLY.

DRAWING NUMBER  
**M-103**

SHEET NUMBER  
**18**